

19th Annual
Quest
of the **West**
— Cattle Sale —



MARCH 8TH, 2024
SPANISH FORK, UTAH

*Western bred, born and raised bulls,
developed for those living the western dream ...*

LiveAuctions.TV
2.0

Quest of the West

— Cattle Sale —



@ Quest of the West Cattle Sale
@ Loveless Gelbvieh
@ Sorensen Angus Ranch

View Loveless Gelbvieh Cattle and Bulls
at www.lovelessgelbvieh.com

Welcome to our 2024 sale!

~ Bott, Bunker, Loveless & Sorensen Families



PAP Risk Factor High Elevation Test Chart

PAP test conducted at elevation above 7,000 feet

All Quest of the West Sale Bulls PAP Tested at 7,200+ feet Elevation

PAP	Use at Low Elevation	Use at Moderate Elevation	Use at High Elevation	Use at Extreme Elevation
Score	< 4,000 feet	4,000-5,000 feet	5,500-7500 feet	>7,500 feet
34-39	Low Risk	Low Risk	Low Risk	Low Risk
40-45	Low Risk	Low Risk	Low Risk	Low Risk
46-49	Moderate Risk	Moderate Risk	Moderate Risk	Moderate Risk
>=50	Moderate Risk	Moderate Risk	High Risk	High Risk

- Special consideration should be given to the amount of time the animal was exposed to elevation (>5,500 feet) prior to testing. The predictability and repeatability of the PAP measurement improves with longer the exposure to higher elevation (minimum of 4 weeks is required).
- This chart is based on animals greater than 10 months of age.
- Testing of younger animals (<10 months) may result in a greater variability to the predictive ability of the measurement.
- Risk—Defined as the likelihood of an animal developing pulmonary hypertension themselves or being at risk for having a genetic predisposition for the disease.

BREEDING GUARANTEES

All bulls in this sale are guaranteed “breeders” the day of the sale. In the event a buyer finds a bull to be a “non-breeder”, he must immediately take the following actions:

1. Notify the seller within six (6) months of the purchase.
2. Return the bull to the seller at the buyer’s expense in healthy and good condition.
3. At that time, the seller may give the buyer a bull of like quality as a replacement, or give the seller credit toward the purchase of another bull at a later date.
4. Seller has the right to prove the bull a “breeder” before giving credit or returning the bull.
5. Guarantees do not apply to injuries (i.e. broken legs, stifles, reproductive injuries, etc.)
6. All guarantees are void in cases where the bull is fit for show, is subject to hormonal treatments, or has been subject to abuse in any way.

Quest of the West

— Cattle Sale —

**Angus • SimAngus
Balancers • Gelbvieh • Simmental**

ACCOMMODATIONS

For reservations, please call the Quality Inn (801-798-9400) or the Hampton Inn (385-248-0550). Both are just off I-15 on Hwy 6 (Exit 257 Northbound; Exit 258 Southbound). On Hwy 6 going east take first Left at the light, and next left after Chappy's Gas Station.

SALE LOCATION

The sale will be held in the Heritage Arena at the Spanish Fork Fairgrounds, 475 S Main Street, Spanish Fork, UT

INSPECTION OF SALE CATTLE

All Cattle will be available for viewing all day Friday March 8th through the conclusion of the sale at the sale facilities. Cattle may also be viewed prior to Wednesday March 6th at the respective ranches at Spanish Fork, UT, and feedlot in Delta, UT. Please contact the individual sellers to make arrangements to view the cattle prior to their arrival at the sale facility.

TERMS AND CONDITIONS

The terms of the sale are cash or check unless arrangements have been made between buyer and seller prior to the beginning of the sale. The animal becomes the property, responsibility and risk of the buyer as soon as declared sold by the auctioneer.

ANNOUNCEMENTS

Announcements from the Auction Block will take precedence over any other printed matter in the sale catalog or supplement sheets.

BIDDING

Each Animal will sell to the highest bidder. Any disputes will be settled by the auctioneer whose decision is final.

LIVESTOCK MORTALITY INSURANCE

To properly insure your investment, Stockmen's Insurance Agency LLC, will be available to assist you with mortality insurance. Contact Bill Pelton at 406-671-5100 or bill@billpelton.com.

RISK & LIABILITY

We the sellers of the cattle offered in this sale, will not be held liable for any accidents that may occur for whatever reason and those attending must do so at their own risk. The sellers and their staff, the auctioneer, Spanish Fork City and its staff assume no liability, legal or otherwise, for any accidents or loss which may occur.



Friday, March 8th, 2024
Spanish Fork, Utah
Spanish Fork Fairgrounds, 475 Main Street
6:00 pm Sale Time • 5:00 pm Dinner

Please bring this sale book with you to the sale.

Contacts & Sale Staff

Sale Day Any of the following Cell Numbers

Circle Four Simmentals	Carl Bott	435-749-9397 (m)
S7 Simmentals	Brett Bunker.	435-864-7815 (m)
Loveless Gelbvieh	Jeff Loveless	801-623-8308 (m)
	Tammy Loveless.	801-623-8309 (m)
Sorensen Angus Ranch	Shane Sorensen	801-420-2962 (m)
	Brian Sorensen	801-372-0762 (m)
	Kevin Sorensen.	801-360-3300 (m)

Staff

Eric Duarte, Auctioneer	541-891-7863 (m)
Brent Robins, Special Representative.	435-979-5176 (m)
Wade Anderson, Special Representative	435-609-9741 (m)
Corbin Redd, Live Auctions	385-221-1719 (m)

Special Guests

Brent Tanner, Executive Director	Utah Cattleman's Association
Jeff Young, President	Utah Cattleman's Association

REGISTRATIONS & TRANSFERS

All bulls, unless otherwise noted in the sale catalog are registered. When making settlement, please indicate if Registrations papers are needed. Each ranch will send the registration paper to the buyer if requested at the time of settlement.

SIGHT UNSEEN PURCHASE OPTION

If you are unable to attend the sale or view the cattle prior to the sale, we offer a "sight unseen" purchase option. Please call and give us your specs in advance of sale time and we will select and try to buy the bull(s) meeting your specs for you. If when you take possession of the bull(s) you are not satisfied, you don't own the bull(s).

CALVING EASE RECOMMENDATION

Some bulls are recommended for use on heifers. These recommendations are based on available tools and knowledge: EPDs, birth weight, extended pedigree and past experience with both sire and dam. This does not mean that you will not have to help any calves, but hopefully most will come with little assistance. Each cattleman needs to base their decisions on their own program and herd.

DELIVERY

Please contact individual consignors prior to the sale if you need assistance with delivery.



Minimum Genetic Requirements

Marbling EPD (Marb)	+0.65
Dollar Grid Carcass Index (\$G)	+55.0

The sale catalog will be posted online as well as additional pictures as they become available at www.questofthewestcattle.net

Angus Bulls



All of the Angus bulls have been sire verified and genomic tested with AngusGS. Buy them with confidence. They are backed by the power of the Angus database, which includes phenotypes and genotypes from herds across the country. We stand behind the pedigrees. By buying the Angus bulls and heifers offered in this sale, you are unlocking the premium potential of AngusLink and other programs.



2
Angus

SAR Barricade B47

Bull calved: 12/27/22 tattoo: B47 reg: AAA 20768543

Sitz Stellar 726D

Sitz Barricade 632F

SITZ Barfarmere Nell 765D

Connealy Impression

Spruce Mountain Emblynette 2134

S A V Emblynette 9200

CE	BW	WW	YW	Milk	\$EN		
+1	+3.1	+78	+134	+25	-30		
CW	IMF	RE	Fat	\$W	\$F	\$B	
+65	+0.91	+0.45	+0.043	+66	+98	+159	



ANGUSGS
Powered by Neogen GenesSeek

Birth Wt	81
205 Wt	748
Scrotal	37
PAP	39

This Barricade son has a royal pedigree. His dam is a Schaff bred cow that served as a donor in other seedstock operations prior to us acquiring her. Growth bull with good carcass values.



1
Angus

SAR Barricade B43

Bull calved: 12/27/22 tattoo: B43 reg: AAA 20768542

Sitz Stellar 726D

Sitz Barricade 632F

SITZ Barfarmere Nell 765D

PVF Insight 0129

SAR Queen Blackcap U76

BRE Queen Blackcap 1466

CE	BW	WW	YW	Milk	\$EN		
+1	+4	+80	+128	+17	-20		
CW	IMF	RE	Fat	\$W	\$F	\$B	
+70	+0.34	+0.38	+0.065	+61	+115	+144	

ANGUSGS
Powered by Neogen GenesSeek

Birth Wt	80
205 Wt	726
Scrotal	39
PAP	36

Herd sire prospect! Sitz Barricade came into the Angus breed and took things by storm. Due to an injury, semen availability is very limited and in high demand. B43 covers all of the bases. Feet, legs, bone, muscle, length of body, low PAP score. He's a great option on a set of cows. Dam is now in the donor pen. Three maternal sisters have been retained.



3
Angus

SAR Barricade B35

Bull calved: 12/26/22 tattoo: B35 reg: AAA 20768541

Sitz Stellar 726D

Sitz Barricade 632F

SITZ Barfarmere Nell 765D

Musgrave Big Sky

SAR Forever Lady W28

SAR Forever Lady S7

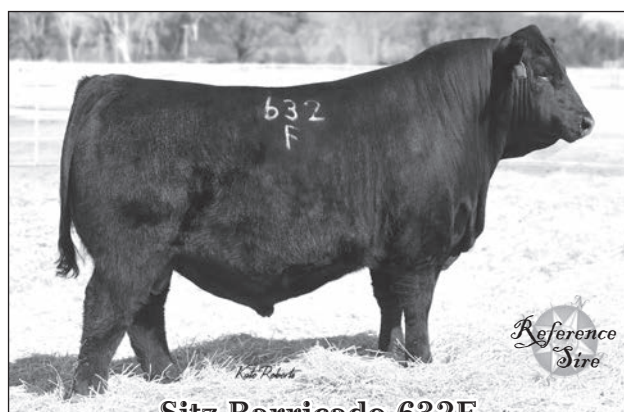
CE	BW	WW	YW	Milk	\$EN		
+0	+3.4	+78	+140	+17	-26		
CW	IMF	RE	Fat	\$W	\$F	\$B	
+69	+0.87	+0.67	+0.054	+57	+115	+176	



ANGUSGS
Powered by Neogen GenesSeek

Birth Wt	83
205 Wt	689
Scrotal	37
PAP	38

3/4 brother to lot 4. This bull comes in a moderate framed package with good muscle expression. Solid cow family on the bottom side of his pedigree.



Sitz-Barricade-632F

Reference
Sire



4 Angus Bull calved: 12/27/22 tattoo: B50 reg: AAA 20768544

Sitz Stellar 726D
Sitz Barricade 632F
SITZ Barbarmere Nell 765D

Musgrave Big Sky
SAR Serena W25
SAR Serena T34

CE	BW	WW	YW	Milk	\$EN	
+11	+1.2	+78	+126	+18	-11	
CW	IMF	RE	Fat	\$W	\$F	\$B
+55	+0.49	+0.66	+0.034	+71	+94	+138

ANGUSGS
Powered by Neogen GeneSeek

Birth Wt	79
205 Wt	685
Scrotal	39
PAP	39

3/4 brother to lot 3, with a little more calving ease. Very maternal package. Ranks in the top 1% for HP and top 2% for \$M. Dam Production: BR 3@100, WR 3@102, YR 2@108.

6 Angus Bull calved: 12/29/22 tattoo: B55 reg: AAA 20768550

Mohnen Substantial 272
Sitz Stellar 726D
SITZ Pride 200B

Connealy Courage 25L
SAR Forever Lady U43
SAR Forever Lady P25

CE	BW	WW	YW	Milk	\$EN	
+5	+0	+73	+127	+24	-23	
CW	IMF	RE	Fat	\$W	\$F	\$B
+42	+0.58	+0.56	+0.044	+70	+79	+124

ANGUSGS
Powered by Neogen GeneSeek

Birth Wt	79
205 Wt	703
Scrotal	38
PAP	46

This bull has cow maker written all over him. He's moderate framed, has great muscle expression and is sound. Should make the easy keeping kind. We calved our first Stellar daughters in December and they are the kind.

5 Angus Bull calved: 01/01/23 tattoo: B59 reg: AAA 20768545

Sitz Stellar 726D
Sitz Barricade 632F
SITZ Barbarmere Nell 765D

Connealy Confidence 0100
SAR Hallie T6
SAR Hallie R2

CE	BW	WW	YW	Milk	\$EN	
-1	+4.4	+90	+146	+17	-36	
CW	IMF	RE	Fat	\$W	\$F	\$B
+75	+0.51	+0.74	+0.069	+65	+115	+157

ANGUSGS
Powered by Neogen GeneSeek

Birth Wt	84
205 Wt	621
Scrotal	38
PAP	42

Mother nature wasn't kind to this bull's ears, but there's a lot of good in him. When the AngusGS results came back, he scored in the top 1% for WW, pushing his WW EPD to +90!



7 Angus Bull calved: 12/25/22 tattoo: B10 reg: AAA 20768549

Mohnen Substantial 272
Sitz Stellar 726D
SITZ Pride 200B

K C F Bennett Absolute
SAR Forever Lady U7
SAR Forever Lady J55

CE	BW	WW	YW	Milk	\$EN	
+10	-1.6	+64	+113	+27	-2	
CW	IMF	RE	Fat	\$W	\$F	\$B
+37	+0.69	+0.41	+0.067	+71	+75	+122

ANGUSGS
Powered by Neogen GeneSeek

Birth Wt	76
205 Wt	699
Scrotal	42
PAP	34

These Stellar sons are moderate framed, well balanced bulls from end to end. Really good calving ease package here. Second lowest PAP score of all Angus bulls at 34. Dam Production: BR 7@98, WR 7@104.



Sitz-Stellar-726D

8 **Angus** **SAR Stellar B17**
 Bull calved: 12/25/22 tattoo: B17 reg: AAA 20768551
 Mohnen Substantial 272
 Sitz Stellar 726D
 SITZ Pride 200B
 PVF Insight 0129
 SAR Forever Lady W42
 SAR Forever Lady P11

CE	BW	WW	YW	Milk	\$EN	
+9	-1.4	+53	+92	+26	+3	
CW	IMF	RE	Fat	\$W	\$F	\$B
+35	+0.63	+0.61	+0.036	+60	+79	+129

ANGUSGS
Powered by Noogen GeneSeek

Birth Wt	205 Wt	Scrotal	PAP
70	613	37	46

Moderate framed Stellar x Insight son. Calving ease option. Twin to Lot 9.

11 **Angus** **SAR Resilient B36**
 Bull calved: 12/26/22 tattoo: B36 reg: AAA 20768547
 Sitz Stellar 726D
 Sitz Resilient 10208
 Sitz Miss Burgess 1856
 S A V Bismarck 5682
 SAR Lass R1
 Azteca Lass AZ10

CE	BW	WW	YW	Milk	\$EN	
+6	+0.7	+73	+131	+26	-12	
CW	IMF	RE	Fat	\$W	\$F	\$B
+50	+0.79	+0.53	+0.048	+72	+93	+149

ANGUSGS
Powered by Noogen GeneSeek

Birth Wt	205 Wt	Scrotal	PAP
75	691	39	37

Sired by Sitz Resilient, who was the high selling bull in the 2019 Sitz Angus fall sale. ORigen describes Resilient as a "low risk - high reward" sire, which is supported by him being the no. 3 sire for registrations in 2023. Well balanced bull here with a dam that has held her own posting BR 8@96 and WR 8@100.

9 **Angus** **SAR Stellar B18**
 Bull calved: 12/25/22 tattoo: B18 reg: AAA 20768552
 Mohnen Substantial 272
 Sitz Stellar 726D
 SITZ Pride 200B
 PVF Insight 0129
 SAR Forever Lady W42
 SAR Forever Lady P11

CE	BW	WW	YW	Milk	\$EN	
-1	+2.4	+68	+114	+14	-15	
CW	IMF	RE	Fat	\$W	\$F	\$B
+53	+0.23	+0.71	+0.023	+51	+102	+134

ANGUSGS
Powered by Noogen GeneSeek

Birth Wt	205 Wt	Scrotal	PAP
75	607	38	32

Well balanced Stellar son who combines it all in a moderate, calving ease package. Great choice for heifers. Twin to Lot 8. Lowest PAP score of all Angus bulls at 32.



10 **Angus** **SAR Resilient B19**
 Bull calved: 12/25/22 tattoo: B19 reg: AAA 20768546
 Sitz Stellar 726D
 Sitz Resilient 10208
 Sitz Miss Burgess 1856
 Lazy JB Dinero 3000
 SAR Valees T78
 Atec Valees AZ14

CE	BW	WW	YW	Milk	\$EN	
+5	+0.1	+82	+141	+27	-25	
CW	IMF	RE	Fat	\$W	\$F	\$B
+49	+0.74	+0.67	+0.059	+81	+82	+136

ANGUSGS
Powered by Noogen GeneSeek

Birth Wt	205 Wt	Scrotal	PAP
75	760	41	33

We don't take calling a bull a herd sire prospect lightly. This Resilient son is a herd sire prospect! His dam is a proven cow that gets it done year after year. A maternal brother was retained as a past herd sire for us. Well balanced EPD profile and an actual PAP score of 33. It's not easy to find that combination. Dam Production: BR 7@98, WR 7@104, YR 5@103. Dam is a pathfinder.

12 **Angus** **SAR Resilient B48**
 Bull calved: 12/27/22 tattoo: B48 reg: AAA 20768548
 Sitz Stellar 726D
 Sitz Resilient 10208
 Sitz Miss Burgess 1856
 Connealy Black Granite
 SAR Paisley W7
 SAR Paisley U27

CE	BW	WW	YW	Milk	\$EN	
+13	-0.6	+69	+110	+29	-7	
CW	IMF	RE	Fat	\$W	\$F	\$B
+31	+0.47	+0.55	+0.062	+78	+73	+111

ANGUSGS
Powered by Noogen GeneSeek

Birth Wt	205 Wt	Scrotal	PAP
77	705	39	38

Lot 12's dam is a Black Granite daughter who is making a name for herself at SAR. On her first four calves, she posted BR 4@97 and WR 4@108. Maternal pedigree. Dam is a pathfinder.



13 Angus SAR Executive Decision B30							
Bull calved: 12/26/22 tattoo: B30 reg: AAA 20768537							
Bar-E-L Natural Law 52Y							
PM Executive Decision 5'17							
PM Blossom 124'13							
Sankeys Lazer 609 of 6N							
SAR Sage N16							
SAR Miss in Focus J24							
CE	BW	WW	YW	Milk	\$EN	Birth Wt	205 Wt
+4	+1.4	+66	+103	+23	+0	79	724
CW	IMF	RE	Fat	\$W	\$F	Scrotal	PAP
+40	+0.58	+0.48	+0.002	+67	+80	37	37

Lot 13 is sired by the Canadian bull Executive Decision and he's a unique one. He's thick, stout made and has that extra dimension. His dam has performed well with BR 9@99 and WR 9@100. Give him a look.

15 Angus SAR Gus B28							
Bull calved: 12/25/22 tattoo: B28 reg: AAA 20768527							
S Chisum 6175							
Circle L Gus							
Circle L PRIDE X097							
SAR Confidence T8							
SAR Forever Lady W86							
SAR Forever Lady P25							
CE	BW	WW	YW	Milk	\$EN	Birth Wt	205 Wt
+7	+1.6	+76	+134	+27	-13	79	711
CW	IMF	RE	Fat	\$W	\$F	Scrotal	PAP
+72	+0.2	+0.69	+0.03	+75	+121	41	49

It's tough to make a calving ease bull more phenotypically correct than this one. Good in his lines and stands on correct feet and legs. Dam had a WR of 104 on her first four calves and is sired by the high selling Angus bull from the 2016 Quest of the West Sale.



14 Angus SAR Big Sky B49							
Bull calved: 12/27/22 tattoo: B49 reg: AAA 20768536							
Connealy Earnan 076E							
Musgrave Big Sky							
SAV Primrose 7861							
Sitz Substantial 9106							
SAR Miss Emulous Y62							
SAR Miss Emulous R48							
CE	BW	WW	YW	Milk	\$EN	Birth Wt	205 Wt
+7	+1.1	+49	+90	+32	-13	79	660
CW	IMF	RE	Fat	\$W	\$F	Scrotal	PAP
+37	+0.74	+0	+0.067	+52	+87	41	36

Correct made son of Big Sky that can get out and move. Another good option for heifers.

16 Angus SAR Gus B58							
Bull calved: 12/30/22 tattoo: B58 reg: AAA 20775931							
S Chisum 6175							
Circle L Gus							
Circle L PRIDE X097							
Lazy JB Desperado 8125							
SAR Forever Lady Y18							
SAR Forever Lady W86							
CE	BW	WW	YW	Milk	\$EN	Birth Wt	205 Wt
+6	+2.1	+69	+123	+29	-10	82	690
CW	IMF	RE	Fat	\$W	\$F	Scrotal	PAP
+67	+0.27	+0.84	+0.053	+69	+118	37	38

Lot 16's dam is a maternal sister to lot 15 that posted a WR of 109 on her first two calves. Sired by Gus, this bull is similar in type and kind to lot 15.

When you need it, you need it.
Animal Health International.



Your needs. Your solution. Your peace of mind.
It's what we do best.

Animal Health International, Inc. is the premier animal health company in North America serving the needs of customers for more than 40 years. No other distributor has a broader product offering. We represent over 1,000 manufacturers that supply products focused on companion animal, equine, beef and dairy cattle, poultry, and swine. Animal Health International has more than 400 sales personnel nationwide, and offers products ranging from vaccines and pharmaceuticals to state of the art equipment and software.

To find out more information about our products and services, please contact your local sales representative or visit us at www.animalhealthinternational.com.



animalhealthinternational.com | 800-854-7664



21

Angus

SAR Top Shelf B9

Bull

calved: 12/11/22

tattoo: B9

reg: AAA 20768539

Ellingson Top Shelf 5050

SAR Top Shelf Z1

SAR Forever Lady X76

McConnell Altitude 3114

SAR Jacey Z35

SAR Jacey S20

ANGUS

GS

Powered by

Moogen GeneSeek

Birth Wt	73
205 Wt	760
Scrotal	39
PAP	40

CE	BW	WW	YW	Milk	\$EN
+9	-0.2	+68	+134	+37	-36
CW	IMF	RE	Fat	\$W	\$F
+50	+0.36	+0.55	+0.038	+69	+88
					\$B
					+123

Dam is a full sib to the lot 17 bull. Great option to use on heifers while not sacrificing pounds at weaning. Recorded a 205 day adjusted weaning weight of 760 lb. to ratio 111.

22

Angus

SAR Juneau B62

Bull

calved: 01/12/23

tattoo: B62

reg: AAA 20768529

Kramers Apollo 317

Lazy JB Desperado 8125

Lazy JB Queen Sheba 125

TC Freedom 104

SAR Serena P13

SAR Miss in Focus J18

Birth Wt

84

205 Wt

679

Scrotal

39

PAP

42

CE	BW	WW	YW	Milk	\$EN	
+6	+3.2	+76	+134	+29	-35	
CW	IMF	RE	Fat	\$W	\$F	\$B
+65	+0.58	+0.59	+0.009	+65	+109	+158

ANGUS

CS

Powered by Neogen GenesSeek

B62 is a bigger geared bull out of our now deceased herd sire Lazy JB Desperado, who left some very nice females in our herd. This bull should be able to get out and cover some ground.



25
Angus

SAR Juneau B85

Bull calved: 02/14/23 tattoo: B85 reg: AAA 20768532

Kramers Apollo 317

Lazy JB Desperado 8125

Lazy JB Queen Sheba 125

S A V Recharge 3436

SAR Emblynette W2

Spruce Mountain Emblynette 2134

CE	BW	WW	YW	Milk	\$EN	Birth Wt	205 Wt	Scrotal	PAP
+5	+1.4	+64	+113	+28	-15	78	543	na	43
CW	IMF	RE	Fat	\$W	\$F	\$B			
+41	+0.15	+0.4	+0.013	+64	+79	+103			

ANGUS
Powered by Neogen GeneSeek

A solid February born bull calf by Desperado out of a good Recharge daughter.



26
Angus

SAR Juneau B86

Bull calved: 02/19/23 tattoo: B86 reg: AAA 20768533

Kramers Apollo 317

Lazy JB Desperado 8125

Lazy JB Queen Sheba 125

Connealy Right Answer 746

SAR Hallie R2

SAR Hallie N1

CE	BW	WW	YW	Milk	\$EN	Birth Wt	205 Wt	Scrotal	PAP
+8	+0.5	+61	+102	+22	+2	79	665	43	45
CW	IMF	RE	Fat	\$W	\$F	\$B			
+24	+0.28	+0.44	+0.05	+62	+60	+88			

ANGUS
Powered by Neogen GeneSeek

Lot 26 is the second to the youngest bull in the sale, but he's good. Smooth sided, big topped and bold in his rib shape.



23
Angus

SAR Juneau B70

Bull calved: 01/18/23 tattoo: B70 reg: AAA 20768530

Kramers Apollo 317

Lazy JB Desperado 8125

Lazy JB Queen Sheba 125

S A V Recharge 3436

SAR Emblynette W44

Champion Hill Emblynette 8530

CE	BW	WW	YW	Milk	\$EN	Birth Wt	205 Wt	Scrotal	PAP
+5	+1	+65	+112	+25	-5	82	596	39	39
CW	IMF	RE	Fat	\$W	\$F	\$B			
+53	-0.15	+0.87	-0.012	+66	+93	+110			

ANGUS
Powered by Neogen GeneSeek

This bull's dam came from some embryos we acquired from our good friends at Larsen Angus. She is Schaff Angus bred all the way through and is an easy keeper with a perfect udder. We have other matings from the same donor.

24
Angus

SAR Juneau B71

Bull calved: 01/20/23 tattoo: B71 reg: AAA 20768531

Kramers Apollo 317

Lazy JB Desperado 8125

Lazy JB Queen Sheba 125

Connealy Courage 25L

SAR Paisley U27

SAR Paisley P7

CE	BW	WW	YW	Milk	\$EN	Birth Wt	205 Wt	Scrotal	PAP
+6	+1.7	+54	+94	+36	+9	82	642	40	40
CW	IMF	RE	Fat	\$W	\$F	\$B			
+37	+0.72	+0.79	+0.029	+67	+81	+138			



ANGUS
Powered by Neogen GeneSeek

Dam is a full sib to the dam of the lot 108 heifer, with both being sired by our Desperado bull. Very maternal pedigree.



Lazy-JB-Desperado-8125

Reference
Sire

Glossary of Terms

IT IS IMPORTANT TO REMEMBER NOT TO COMPARE EPDS FROM BREED TO BREED!

EPDs (*Expected Progeny Difference*): EPDs are a statistical measurement of a bull's ability to transmit certain traits to his offspring based on his dams, sires and own production & performance record, as well as his own progeny's record when data is submitted. EPDs allow for the evaluation of cattle of the same breed from ranch to ranch with out concern for differences in environment, nutrition and management. **IT IS IMPORTANT TO REMEMBER NOT TO COMPARE EPDS FROM BREED TO BREED!** The following are descriptions of the EPDs used in this catalog.

CED: Calving Ease Direct is expressed as a difference in percentage of unassisted births with a higher value indicating greater calving ease in first-calf heifers.

BW: Expressed in pounds, is a predictor of a sire's ability to transmit BW to his progeny compared to that of other sires. The lower the EPD, the lighter the BW on average.

WW: Expressed in pounds, is a predictor of a sire's ability to transmit growth to weaning in his progeny compared to that of other sires. The higher the EPD, the heavier the WW on average.

YW: Expressed in pounds, is a predictor of a sire's ability to transmit growth to yearling in his progeny compared to that of other sires.

Milk: A predictor of a sire's genetic merit for milk & mothering ability transmitted to his daughters.

%IMF: A predictor of a sire's progeny for % intramuscular fat (marbling) in the rib eye compared to other sires.

RE: A predictor of the difference in square inches of ultrasound rib eye area of a sire's progeny compared to the progeny of other sires.

FAT: A predictor of the difference in ultrasound fat thickness at the 12th rib of a sire's progeny compared to the progeny of other sires.

CW: (*Sim*) A predictor of the difference in carcass wt. of a sire's progeny compared to the progeny of other sires.

YG: (*Sim*) A predictor of the difference in Yield Grade of a sire's progeny compare to the progeny of other sires. Like actual Yield Grade itself, the lower the number the better.

\$W: (*Angus*) Weaned Calf Dollar Value EPD quantifies four primary economic impact areas (BW, WW, Maternal Milk, & Mature Cow Size) and combined into an economic value expressed in dollars per head.

\$F: (*Angus*) Feedlot Value, an index value expressed in \$/hd & is the expected average difference in future progeny performance for post weaning merit compared to progeny of other sires.

\$G: (*Angus*) Grid Value, an index expressed in \$/hd & is the expected average difference in future progeny performance for carcass grid merit.

\$B: (*Angus*) Beef Value, a simultaneous multi-trait genetic selection for feedlot & carcass merit, & predicts the average \$/hd difference in the progeny's post weaning performance & carcass value compared to progeny of other sires.

YG: (*GV*) Differences in yield grade score, which is a predictor of percent retail product. Smaller values suggest that progeny will have a better lean to fat ratio.

CW: (*GV*) Differences in pounds of hot carcass weight, adjusted to an industry standard age endpoint.

REA: (*GV*) Differences in ribeye area in inches between the 12th and 13th rib. Greater ribeye areas are preferable.

MB: (*GV*) Predicts the differences in the degree of marbling within the ribeye as expressed in marbling score units. Greater marbling numbers are preferable and are an indicator of higher carcass quality grades.

FT: (*GV*) Differences for fat thickness, in inches, for a carcass over the 12th rib, smaller numbers of fat thickness are preferable as excess fat can be detrimental to yield grade.

New
2024
Product

MOUNTAIN COUNTRY EQUIPMENT

CONTINUOUS FENCE, LARGE BALE HAY
FEEDERS, LIVESTOCK PANELS & GATES.
DRILL PIPE, SUCKER ROD, AND MORE!

435-623-0186

Nephi, Utah 84648

Balancer Bulls



27
Balancer

OL NET RETURN E030L

Bull calved: 1/16/23 tattoo: E030L reg: AMV1582847

CCMF MR PAYWEIGHT 19C ET
CTR NET RETURN 0700H ET
GARRETS EMBLAZON

KCF BENNETT Y6
E030

CE	BW	WW	YW	Milk	TM	Birth Wt	205 Wt	Scrotal	PAP
+10	+1.5	+84	+130	+15	+57	89	32	35	
CW	IMF	RE	CEM	YG	F				
+57	+0.42	+0.72	+5	+0.06	+0.04				

41% • BLK • P

030LC - Net Return. Top individual with plenty of dimension, capacity and performance. Wide-based stylish bull. Ranks in top 10% WW, 15% YW, 35% MB. Good bone, feet and legs.



28
Balancer

OL NET RETURN WATCH 440

Bull calved: 1/11/23 tattoo: 44L reg: AMGV1582841

CCMF MR PAYWEIGHT 19C ET
CTR NET RETURN 0700H ET
GARRETS EMBLAZON

LAZT TV WATCHMAN W021
440D WATCH

CE	BW	WW	YW	Milk	TM	Birth Wt	205 Wt	Scrotal	PAP
+8	+1.7	+80	+124	+21	+60	88	38	37	
CW	IMF	RE	CEM	YG	F				
+50	+0.19	+0.28	+3	+0.09	+0.01				

44% • BLK • P

44L - Net Return. Thickness, muscle, stoutness and structure. A powerful bull with lots of middle. Good disposition. Ranks in the top 15% WW, 20% YW. Great cow family.

29
Balancer

OL NET RETURN 01

Bull calved: 1/13/23 tattoo: 01L reg: AMGV1582815

CCMF MR PAYWEIGHT 19C ET
CTR NET RETURN 0700H ET
GARRETS EMBLAZON

EGL LIFELINE B101
STAR JEWELL 01
EGL BARRETT B050

CE	BW	WW	YW	Milk	TM	Birth Wt	205 Wt	Scrotal	PAP
+13	-0.1	+69	+106	+19	+53	78	36	40	
CW	IMF	RE	CEM	YG	F				
+38	+0.15	+0.5	+7	-0.06	-0.01				

50% • BLK • P

01L - Net Return. Moderate frame bull. Sound mover with great feet and legs. Maternal line is a plus.

QUEST
of the WEST

“Go confidently in the
direction of your dreams.
Live the life you have imagined.”

- Henry David Thoreau



30 **OL NET RETURN 016**
 Bull calved: 1/10/23 tattoo: 016L reg: AMGV1582809
 CCMF MR PAYWEIGHT 19C ET
 CTR NET RETURN 0700H ET
 GARRETS EMBLAZON

HYEK BLACK IMPACT						Birth Wt	85
016A IMPACT ET						205 Wt	
BUSHWACKER						Scrotal	35
CE	BW	WW	YW	Milk	TM	PAP	36
+11	+1	+56	+84	+23	+51		
CW	IMF	RE	CEM	YG	F		
+35	+0.18	+0.19	+5	+0.07	+0.01		

50% • BLK • P

016L - Net Return. Attractive bull with athletic movement. Square made, thick down the top, long bodied with a deep rib. Cow family has great feet, udder and fertility.



31 **OL JUSTICE 5767 877**
 Bull calved: 1/10/23 tattoo: 877L reg: AMGV1582810
 KCF CHIEF JUSTICE C205
 JKGF 417 JUSTICE
 SANDPOINT BUTKUS X797

CTR IMPRESSIVE						Birth Wt	84
267XG						205 Wt	
CONNEALY DANNYBOY						Scrotal	36
CE	BW	WW	YW	Milk	TM	PAP	33
+10	+2.1	+80	+122	+24	+64		
CW	IMF	RE	CEM	YG	F		
+52	+0.28	+1.02	+6	-0.21	-0.02		

56% • BLK • P

877L - Justice. A performance bull with volume and rib shape to sire easy fleshing calves. Cow making kind of bull. Highly maternal pedigree. Travels out nice and correct. Ranks in the top 15% WW, 25% YW, 10% YG.



View Loveless Gelbvieh Cattle and Bulls at
www.lovelessgelbvieh.com
 or
 on Facebook - Loveless Gelbvieh



32 **OL JUSTICE 5767 167**
 Bull calved: 1/1/23 tattoo: 167L reg: AMGV1582823
 KCF CHIEF JUSTICE C205
 JKGF 417 JUSTICE
 SANDPOINT BUTKUS X797

CTR IMPRESSIVE						Birth Wt	82
670H ET POLL STAR						205 Wt	
CTR POLL STAR						Scrotal	37
CE	BW	WW	YW	Milk	TM	PAP	35
+11	+2	+84	+136	+22	+65		
CW	IMF	RE	CEM	YG	F		
+43	+0.24	+0.84	+6	-0.25	-0.05		

62% • BLK • P

167L - Justice. Top individual with plenty of dimension, capacity and very powerful. Wide-based stylish bull. Good bone, feet and legs. Great cow family. Ranks in the top 10% WW, 10% YW.

33 **OL JUSTICE SH 242**
 Bull calved: 1/11/23 tattoo: 242L reg: AMGV1582840
 Balancer KCF CHIEF JUSTICE C205
 JKGF 417 JUSTICE
 SANDPOINT BUTKUS X797

CTR SANDHILLS						Birth Wt	88
242B FOCUS						205 Wt	
CE	BW	WW	YW	Milk	TM	Scrotal	36
+10	+1.3	+78	+124	+18	+57	PAP	39
CW	IMF	RE	CEM	YG	F		
+57	+0.36	+0.94	+5	-0.08	+0.01		

63% • BLK • P

242L - Justice. Super complete bull with thickness across the top and deep in the middle. Great disposition. Dam is easy fleshing with a beautiful udder and feet. Ranks in the top 20% WW, 20% YW, 50% MB.



35 **OL JUSTICE MARB 525**
 Bull calved: 1/1/23 tattoo: 525L reg: AMGV1582812
 Balancer KCF CHIEF JUSTICE C205
 JKGF 417 JUSTICE
 SANDPOINT BUTKUS X797

MARBLE TENDER 006X						Birth Wt	87
525H EGL LIFELINE B101						205 Wt	
CE	BW	WW	YW	Milk	TM	Scrotal	35
+12	+0	+72	+116	+20	+57	PAP	34
CW	IMF	RE	CEM	YG	F		
+42	+0.48	+0.68	+6	-0.11	-0.01		

62% • BLK • P

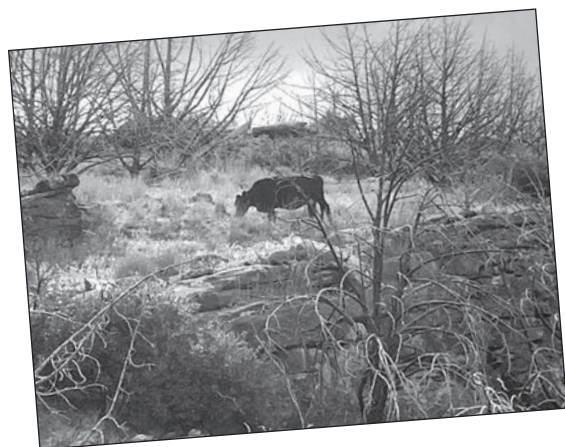
525L - Justice. Thick, deep, lots of middle and big scrotal. Will sire easy fleshing calves. Here is a gentle bull with a hard to beat maternal pedigree. Top 20% MB. Travels out nice and correct.

34 **OL JUSTICE PL 561**
 Bull calved: 1/14/23 tattoo: 561L reg: AMGV1582827
 Balancer KCF CHIEF JUSTICE C205
 JKGF 417 JUSTICE
 SANDPOINT BUTKUS X797

BGGR BLK PAYLOAD 6152						Birth Wt	79
602G POLL PL ET 561						205 Wt	
CE	BW	WW	YW	Milk	TM	Scrotal	37
+14	+0.4	+76	+126	+22	+60	PAP	41
CW	IMF	RE	CEM	YG	F		
+36	+0.23	+0.65	+8	-0.16	-0.03		

64% • BLK • P

561L - Justice. A powerfully constructed bull with a big top and square hip. Very three dimensional. Will add pounds and performance. Clean made bull.



36 **OL JUSTICE 118**
 Bull calved: 1/11/23 tattoo: 119CL reg: AMGV1582845
 Balancer KCF CHIEF JUSTICE C205
 JKGF 417 JUSTICE
 SANDPOINT BUTKUS X797

CTR SANDHILLS						Birth Wt	86
218C 18X CAROLINA FORTUNE						205 Wt	
CE	BW	WW	YW	Milk	TM	Scrotal	34
+11	+1.5	+79	+127	+19	+59	PAP	34
CW	IMF	RE	CEM	YG	F		
+52	+0.5	+0.83	+6	-0.07	+0.01		

69% • BLK • P

118L - Justice. Here is a bull with plenty of volume and natural muscle everywhere in a complete package. He has a lot to offer in his pedigree with excellent numbers. Top 15% WW, 15% YW and 20% MB.

37
Balancer**OL CAPITAL 332**

Bull calved: 1/12/23 tattoo: 332L reg: AMGV1582898

LD CAPITALIST 316

CTR CAPITAL ASSET 9756G

TRACTION 7412

EGL LIFELINE B101

332G LIFE

ADKINS JACKPOT 906W

CE	BW	WW	YW	Milk	TM	Birth Wt	205 Wt	Scrotal	PAP
+11	+2.9	+91	+143	+26	+72	80		32	38
CW	IMF	RE	CEM	YG	F				
+42	+0.3	+0.55	+6	-0.03	+0				

50% • BLK • P

332L - Capital Asset. A powerfully constructed bull with a lot of class, clean made, very three dimensional. Will add pounds and performance. Ranks Top 2% WW, 3% WW.

38
Balancer**OL CAPITAL 722**

Bull calved: 1/12/23 tattoo: 722L reg: AMGV1582837

LD CAPITALIST 316

CTR CAPITAL ASSET 9756G

TRACTION 7412

JKGF DITKA C85

722G

3G SMOKE N MIRRORS

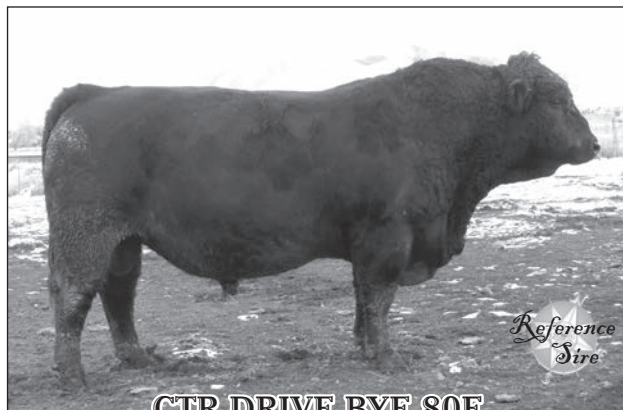
CE	BW	WW	YW	Milk	TM	Birth Wt	205 Wt	Scrotal	PAP
+13	-1.6	+74	+111	+26	+63	78		33	42
CW	IMF	RE	CEM	YG	F				
+34	+0.46	+0.1	+8	+0.13	+0.02				

49% • BLK • P

722L - Capital Asset. Clean made, well balanced. Modest birthweight and strong growth figures. Ranks top 25% BW, 35% WW, 25% MB.

Mountain View Wholesale LLC
Thor Grasteit
Manager / Owner

(801) 380-6636 cell

 (435) 427-9116 fax
 thor.grasteit@gmail.com
 P.O. Box 415
 Fairview, UT 84629
**CTR DRIVE BYE 80F****39**
Balancer**OL RAIN CIRCLE 90**

Bull calved: 2/19/23 tattoo: 90L reg: AMGV1582857

SAV RAINFALL 6846

DBRG MR MOUNTAIN RAIN 1095J

ELK OUTLOOK 712Y

CIRCLE L LANDMARK

CCIRCLE L 90H

AAR TEN X 7008 SA

CE	BW	WW	YW	Milk	TM	Birth Wt	205 Wt	Scrotal	PAP
+14	-1.5	+74	+126	+26	+63	75		34	38
CW	IMF	RE	CEM	YG	F				
+49	+0.57	+0.58	+10	+0.07	+0.04				

25% • BLK • P

90L - MTN Rain. Exceptional rib shape and capacity that carries extra thickness down his top and through his hip. A phenotypic standout. He combines power, performance and eye appeal in a balanced package. Smooth, fluid mover. A bull with numbers. Ranks Top 25% BW, 35% WW, 15% YW, 10% MB.

40
Balancer**OL NET RAIN 95C**

Bull calved: 1/13/23 tattoo: 95CL reg: AMGV1582835

SAV RAINFALL 6846

DBRG MR MOUNTAIN RAIN 1095J

ELK OUTLOOK 712Y

DVE DAVIDSON JACKPOT

995C

RB LIMITED EDITION

CE	BW	WW	YW	Milk	TM	Birth Wt	205 Wt	Scrotal	PAP
+9	+0.6	+66	+104	+23	+56	85		34	33
CW	IMF	RE	CEM	YG	F				
+41	+0.32	+0.17	+6	+0.07	+0				

50% • BLK • P

95L - MTN Rain. Stellar phenotype, powerful performance, herd changing properties and breed impacting potential. Body mass and muscle shape along with great maternal advantages.

41
Balancer**OL SLAMMER 1125**

Bull calved: 1/1/23 tattoo: 1125L reg: AMGV1582846

VRT LAZY TV SAM U451

WRJ SAWTOOTH SAMMER 18B

MIL LRH ATLAS MARCUS

KCK BENNETT ABSOLUTE

A25 ABS

DANNYBOY

CE	BW	WW	YW	Milk	TM	Birth Wt	205 Wt	Scrotal	PAP
+12	+0.8	+74	+108	+25	+61	85		38	34
CW	IMF	RE	CEM	YG	F				
+33	+0.36	+0.51	+6	-0.14	-0.03				

60% • BLK • P

1125L - Sammer. Top individual with plenty of dimension, capacity and performance. Wide-based, stylish bull. Good bone, feet and legs. He is the kind that will thrive in any condition. Great cow family. Top 50% MB.

42
Balancer**OL DRIVE 603**

Bull calved: 2/7/23 tattoo: 603L reg: AMGV1582833

EGL GAME CHANGER D136

CTR DRIVE BYE 80F

CTR GOODNIGHT 715T

JKGF DITKA C85

301G 602

HYEK BLK IMPACT

CE	BW	WW	YW	Milk	TM	Birth Wt	205 Wt	Scrotal	PAP
+10	+1.5	+85	+127	+25	+37	88		33	32
CW	IMF	RE	CEM	YG	F				
+37	+0.25	+0.33	+5	+0.02	+0				

47% • BLK • P

603L - Drive Bye. Thick made deep bodied. Big footed, sound structured individual that moves out real nice. Ranks Top 10% WW, 15% YW. Will add muscle and performance to your calves.

43

Balancer

OL DRIVE SAM 326

Bull

calved: 1/1/23

tattoo: 326HL

reg: AMGV1582849

EGL GAME CHANGER D136

CTR DRIVE BYE 80F

CTR GOODNIGHT 715T

DLW SAM ET

326H

DLW INDUSTRY 301X

CE	BW	WW	YW	Milk	TM	Birth Wt	84
+12	+0.5	+70	+91	+22	+56	205 Wt	
						Scrotal	36
						PAP	34
CW	IMF	RE	CEM	YG	F		
+38	+0.41	+0.19	+7	-0.03	-0.03		

53% • BLK • P

326HL - Drive Bye. Muscle and moderation built for the cowman. A nice EPD profile with maternal strength. Deep rib and lots of thickness. Attractive bull with athletic movement. Ranks top 35% MB.

<div>44</div> <div>Balancer</div>	OL DRIVE POLL 251						
	Bull	calved: 1/19/23		tattoo: 251L		reg: AMGV1582843	
	EGL GAME CHANGER D136						
	CTR DRIVE BYE 80F						
	CTR GOODNIGHT 715T						
	EGL LIFELINE B101						
	251 POLL ET						
JRI PROBITY 254D							
CE	BW	WW	YW	Milk	TM	Birth Wt	73
+17	-0.7	+73	+107	+20	+56	205 Wt	
						Scrotal	35
						PAP	36
CW	IMF	RE	CEM	YG	F		
+41	+0.22	+0.51	+10	-0.09	-0.02		

47% • BLK • P

251L - Drive Bye. Combines power, performance and eye appeal. A rugged rancher bull bred to cover big country. Will add fleshing ability. Lots of middle.

45

Balancer

OL DRIVE BYE ABS 325

Bull

calved: 1/1/23

tattoo: 325L

reg: AMGV1582848

EGL GAME CHANGER D136

CTR DRIVE BYE 80F

CTR GOODNIGHT 715T

KCF BENNETT ABSOLUTE

325 ABS

SPUR KINGS RANSOME

CE	BW	WW	YW	Milk	TM	Birth Wt	84
+12	+1.1	+76	+107	+20	+58	205 Wt	
CW	IMF	RE	CEM	YG	F	Scrotal	34
+47	+0.37	+0.57	+7	-0.04	-0.01	PAP	36

47% • BLK • P

325L - Drive Bye. Thickness, muscle, stoutness and structure in a moderate easy fleshing package. Structurally fault free package with super foot quality. Great cow family.

<div><div><div>46</div><div>Balancer</div></div></div>		OL DRIVE 4301					
Bull		calved: 1/11/23		tattoo: 4301L		reg: AMGV1582842	
		EGL GAME CHANGER D136					
		CTR DRIVE BYE 80F					
		CTR GOODNIGHT 715T					
		KCF BENNRTT Y6					
		4301D					
		VRT LAZY TV WATCHMAN					
CE	BW	WW	YW	Milk	TM	Birth Wt	84
+13	-1.9	+68	+100	+20	+54	205 Wt	36
						Scrotal	
						PAP	
CW	IMF	RE	CEM	YG	F	35	
+37	+0.52	+0.33	+8	+0.04	+0.01		

47% • BLK • P

4130L - Drive Bye. Moderate bull with a thick top, deep rib and a big hind quarter. Attractive patterned and super sound structured bull with added muscle and dimension. Top 20% BW, 20% MB.

47

Balancer

OL BLK SILVER 253

Bull

calved: 1/14/23

tattoo: 253L

reg: AMGV1583703

KM BROKEN BOW 002

CIRCLE L SILVER BOW 200H

CIRCLE L LADY

HYEK BLACK IMPACT

253E BI

878 NEW DESIGN

CE	BW	WW	YW	Milk	TM	Birth Wt	85
+12	+0.3	+76	+123	+25	+64	205 Wt	
						Scrotal	34
						PAP	33
CW	IMF	RE	CEM	YG	F		
+36	+0.63	+0.39	+6	+0.08	+0.04		

38% • BLK • P

253L - Silver. Explosive performance and dominating phenotype with massive width, depth and volume. He conveys herd making ability and a highly maternal pedigree. Great feet and legs, strides out well. Ranks Top 30% WW, 20% YW, 10% marbling.

48

Balancer

OL SILVER HILLS 3012

Bull

calved: 1/11/23

tattoo: 3012L

reg: AMGV1583704

KM BROKEN BOW 002

CIRCLE L SILVER BOW 200H

CIRCLE L LADY

CTR SANDHILLS

3011 SH

EGL NORTHERN EXPOSTURE H171

CE	BW	WW	YW	Milk	TM	Birth Wt	84	
+12	+1	+80	+126	+25	+66	205 Wt		
						Scrotal		36
						PAP		40
CW	IMF	RE	CEM	YG	F			
+41	+0.63	+0.3	+8	+0.04	+0			

25% • BLK • P

3012L - Silver* Moderate frame bull with lots if eye appeal combining tremendous base width and muscle with exceptional substance, rib shape and length of body. A power bull package with imposing phenotype.* Maternal line is a plus.Ranks Top 15% WW, 15% YW, Top 10% marbling.

49

Balancer

OL SAM 030

Bull

calved: 1/20/23

tattoo: 300CL

reg: AMGV1582819

VRT LAZY TV SAM U451

DLW SAM ET

THOMAS LADY JET

CTR SANDHILLS

030C 03Y

CONNEALY INDUSTRY 5634

CE	BW	WW	YW	Milk	TM	Birth Wt	89
+12	+2.3	+81	+120	+17	+57	205 Wt	
						Scrotal	35
						PAP	37
CW	IMF	RE	CEM	YG	F		
+46	+0.21	+0.54	+6	+0.04	+0.02		

50% • BLK • P

030CL - Sam. Attractive patterned and super sound structured bull with added muscle and dimension. Big topped. Great feet and legs. Ranks top 15% WW, 25% YW.



CIRCLE L SILVER BOW 200H



50 **OL WASTCH LIFE 330GL**
 Bull calved: 1/1/23 tattoo: 330L reg: AMGV1582807
 BGG R BLK PAYLOAD 6152
WASTCH 305ET
 POLL STAR 5160

EGL LIFELINE B101						Birth Wt	85
030E 30G LIFE						205 Wt	
KCF BENNETT Y6						Scrotal	36
CE	BW	WW	YW	Milk	TM	PAP	35
+12	+0.1	+79	+117	+16	+55		
CW	IMF	RE	CEM	YG	F		
+30	+0.32	+0.54	+6	-0.15	-0.03		

50% • RED • P
 330L - Wasatch. Attractive bull with athletic movement. Long bodied with a deep rib. Cow family has great feet, udder and fertility. Ranks top 20% WW.



52 **OL 866 WATACH NEB**
 Bull calved: 1/14/23 tattoo: 866l reg: AMGV1582825
 BGG R BLK PAYLOAD 6152
WASTCH 305ET
 POLL STAR 5160

BALDRIDGE NEB.						Birth Wt	85
866 z						205 Wt	
GOOD NIGHT 715T						Scrotal	38
CE	BW	WW	YW	Milk	TM	PAP	35
+14	-0.2	+65	+107	+21	+53		
CW	IMF	RE	CEM	YG	F		
+33	+0.42	+0.48	+8	-0.06	+0		

40% • BLK • P
 866L - Wasatch. He is complete, well balanced, smooth fronted and loaded with muscle, volume and depth of rib. A cow maker that you can build a herd around. Ranks top 30% MB.



51 **OL WASTCH ABS 61**
 Bull calved: 1/11/23 tattoo: 61L reg: AMGV1582839
 BGG R BLK PAYLOAD 6152
WASTCH 305ET
 POLL STAR 5160

VRT LAZY TV WATCHMAN						Birth Wt	92
616B ABS						205 Wt	
KCF BENNETT ABSOLUTE						Scrotal	37
CE	BW	WW	YW	Milk	TM	PAP	35
+8	+2.3	+79	+120	+20	+59		
CW	IMF	RE	CEM	YG	F		
+43	+0.42	+0.77	+3	-0.08	-0.18		

45% • BLK • P
 61L - Wasatch. A powerfully constructed bull with a big top, square hip and deep down the middle. Very three dimensional. Will add pounds and performance. Ranks top 20% WW, 25% YW, Top 35% MB.



53 **OL GAME DAY 341**
 Bull calved: 1/1/23 tattoo: 341L reg: AMGV1582836
 OVER DRAFT PICK 413D
RROG OVER GAME DAY 443G ET
 DCH HILLE U112

CTR SANDHILLS						Birth Wt	92
341C						205 Wt	
B-R NEW FRONTIER 095						Scrotal	37
CE	BW	WW	YW	Milk	TM	PAP	39
+7	+4.4	+79	+124	+17	+56		
CW	IMF	RE	CEM	YG	F		
+57	+0.37	+0.55	+4	-0.02	-0.01		

50% • BLK • P
 341L - Over Game Day. Powerful growth bull with tremendous length, muscle and depth in the rib and flank. He is square hiped with length, a big top and a big foot. Cowmans bull. Ranks top 20% WW, 20% YW.

54
Balancer**OL GAME DAY 010**

Bull calved: 1/19/23 tattoo: 010L reg: AMGV1582859

OVER DRAFT PICK 413D

RROG OVER GAME DAY 443G ET

DCH HILLE U112

EGL LOCK AND LOAD

EGL FARRAH B010

JRE EXTRA EXPOSTURE

CE	BW	WW	YW	Milk	TM	Birth Wt	205 Wt	Scrotal	PAP
+10	+0.6	+70	+112	+16	+51	88	33	32	
CW	IMF	RE	CEM	YG	F				
+31	+0.04	+0.76	+4	-0.33	-0.07				

63% • RED • P

010L - Over for Game Day. Moderate, deep ribbed, red bull. Athletic mover with good bone and feet. Top 10% REA.

**56**
Balancer**56**
Balancer**OL WASATCH 311D 46L**

Bull calved: 2/11/23 tattoo: 46L reg: AMGV1582811

WASATCH 305 ET

WASATCH 311D

3011T ET

HYEK BLACK IMPACT

46D BLK IMPACT ET

BUSHWACKER

CE	BW	WW	YW	Milk	TM	Birth Wt	205 Wt	Scrotal	PAP
+11	+0.4	+71	+107	+27	+62	88	36	35	
CW	IMF	RE	CEM	YG	F				
+22	+0.22	+0.46	+5	-0.09	+0				

57% • BLK • P

46L - Watatch 311. Clean, moderate, thick down the back. A performance bull with length and a big top. Good footed, stout mover. Maternal.

**55**
Balancer**55**
Balancer**OL GAME DAY MONEY 236**

Bull calved: 1/8/23 tattoo: 236L reg: AMGV1582950

OVER DRAFT PICK 413D

RROG OVER GAME DAY 443G ET

DCH HILLE U112

EGL DAY MONEY C047

236G

VRT LAZY TV OLD SCHOOL

CE	BW	WW	YW	Milk	TM	Birth Wt	205 Wt	Scrotal	PAP
+7	+4	+87	+139	+25	+68	90	35	32	
CW	IMF	RE	CEM	YG	F				
+61	+0.19	+0.99	+4	-0.24	-0.06				

56% • RED • P

36L - Over for Game Day. Moderate framed with power, thickness and dimension. Extremely deep bodied bull that moves out nice. Ranks top 4% WW, 4% YW.

**57**
Balancer**57**
Balancer**OL FRANCHISE 254D 5605**

Bull calved: 1/22/23 tattoo: 5-605L reg: AMGV1582897

WWG C28

MJBC FRANCISE F806

ABC'S SGSR BLK VELVET 19U

JRI PROBITY 254D28

5-606 ET

CTR POLL STAR 5160E

CE	BW	WW	YW	Milk	TM	Birth Wt	205 Wt	Scrotal	PAP
+17	-3.7	+60	+86	+22	+52	74	36	33	
CW	IMF	RE	CEM	YG	F				
+32	+0.4	+0.5	+9	-0.09	-0.01				

75% • BLK • P

5-605L - Franchise. Heifer bull. Deep bodied with a little more frame. 75% Gelbvieh. Out of a great cow that never disapoints. Ranks top 4% BW.

Reference
Sire

RROG OVER GAME DAY 443G ET

Protect Your PRF

(Pasture, Rangeland, Forage)



CONTACT

Mike Browning
801-949-6453

mbrowning@ckpinsurance.com



- **Affordable**
- **Backed by the USDA**
- **Protects your cash flow**
- **No record-keeping**
- **Quick & easy claim payments**
- **No adjusters required**

When buying business insurance, it's okay to have a generalist agent.

When buying PRF insurance, it's SMART to have a SPECIALIST.

Let CKP Help You Protect Your PRF

Our trusted risk advisors are trained to help you analyze complicated insurance data so you:

- Protect your land and livelihood against potential losses during times of drought.
- Make the most informed decision for your business.
- Never purchase unnecessary coverage and pay more than you need.



Contact your CKP Trusted Risk Advisor today.

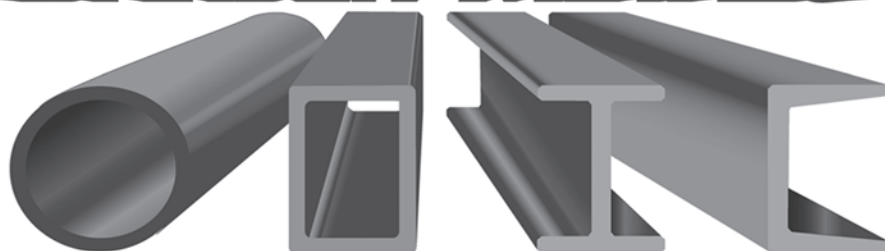


877-CKP-INS1 (877-257-4671)

ckpinsurance.com

If you can think it we can build it!

BARBER METALS



FLAT BAR - PLATE - TUBE - REBAR - CHANNEL
ALL SIZES AVAILABLE

ALSO:

**Quality Powder
Coating**

SANDBLASTING - POWDER COATING
HANDRAILS - RAILING - TRAILERS
CAR FRAMES - RIMS
WE CAN COAT ANY METAL, STEEL OR ALUMINUM

812 EAST 1950 NORTH, SPANISH FORK, UT
PHONE: (801) 794-2573 ~ FAX: (801) 794-1086 EMAIL: BARBERMETALS@YAHOO.COM

**Smarter
Insurance for
Agriculture.®**



Contact me to learn more.



No one knows farming and ranching like Farm Bureau.

For more than 75 years, we've been a trusted insurance leader providing comprehensive coverage for your farm/ranch, your machinery, your livestock -- and so much more. We're proud of our agricultural roots and that **we're the #1 ag insurer in our territory.**

**FARM BUREAU
FINANCIAL SERVICES**
Auto | Home | Life | Annuities | Business | Farm & Ranch

Melanie Bennett
195 N Main St
Fillmore
(435) 743-5746
(435) 864-8085 Cell

2015 SNL P&C Group _ Farm Bureau Property & Casualty Insurance Company and Western Agricultural Insurance Company direct written premium. Farm Bureau Property & Casualty Insurance Company^, Western Agricultural Insurance Company*, Farm Bureau Life Insurance Company*, West Des Moines, IA *Company providers of Farm Bureau Financial Services PC096 (1-17)

58 **OL FRANCHISE LIFE 660**
 Bull calved: 1/11/23 tattoo: 660L reg: AMGV1582817
 Balancer WWG C28
 MJBC FRANCHISE F806
 ABC'S SCGR BLK VELVET 19U
 EGL LIFELINE B101
 660 ET CTR POLL STAR 5160E

CE	BW	WW	YW	Milk	TM	Birth Wt	65
+20	-3.1	+72	+106	+21	+57	205 Wt	33
CW	IMF	RE	CEM	YG	F	Scrotal	35
+34	+0.15	+0.38	+9	-0.12	-0.04	PAP	

75% • BLK • P
 660L - Franchise. Heifer bull. Moderate, wide top, clean fronted with good spring to his rib. Ranks top 10% BW, 1% CED.



61 **OL BLOSSOM GUNNER 42 ET**
 Bull calved: 1/5/23 tattoo: 42L ET reg: AMGV1583604
 Balancer GHGF LONE STAR D027
 MCCA GUNNER 947G
 MCCA CLEMENTINE 5147C
 PHG BAKKEN Z35
 PHG BLOSSOM B83
 WVR LILAH 102L ET

CE	BW	WW	YW	Milk	TM	Birth Wt	0
+9	+3.9	+80	+125	+25	+65	205 Wt	36
CW	IMF	RE	CEM	YG	F	Scrotal	38
+38	+0.31	+1.02	+4	-0.37	-0.06	PAP	

94% • RED • P
 42L - Gunner ET. Donor dam is the great PHG Blossom cow. Has a little more frame with a wide top and deep rib. Great feet and legs. Travels out well. Great maternal genetics. Ranks top 10% WW, 10% YW, 20% MB.



59 **OL END ZONE J108**
 Bull calved: 1/3/23 tattoo: L108 reg: AMGV1583940
 Balancer BIEBER DEEP END B597
 BROWN JRAR END ZONE H6629
 BKT BECKTON NEBULA
 RWG EXACT COMBINATION 7409
 PHG MISS LACE J108
 PHG LEGACY D05

CE	BW	WW	YW	Milk	TM	Birth Wt	65
+12	-2.8	+68	+99	+24	+57	205 Wt	35
CW	IMF	RE	CEM	YG	F	Scrotal	35
+39	+0.37	+0.62	+7	-0.11	-0.01	PAP	

50% • RED • P
 L108 - End Zone. Red heifer bull. Powerful, moderate, wide top, clean fronted with good spring to his rib. Ranks top 10% BW.

62 **OL BLOSSOM GUNNER 886 ET**
 Bull calved: 1/4/23 tattoo: 886L ET reg: AMGV1583606
 Balancer GHGF LONE STAR D027
 MCCA GUNNER 947G
 MCCA CLEMENTINE 5147C
 PHG BAKKEN Z35
 PHG BLOSSOM B83
 WVR LILAH 102L ET

CE	BW	WW	YW	Milk	TM	Birth Wt	0
+12	+2.8	+75	+117	+25	+63	205 Wt	37
CW	IMF	RE	CEM	YG	F	Scrotal	36
+42	+0.45	+0.93	+6	-0.28	-0.05	PAP	

94% • RED • P
 886L - Gunner ET. Out of the great donor dam PHG Blossom. Lots of eye appeal. Very clean with a thick top and deep rib. Big bone and feet. Ranks top 25% WW, 15% YW, 20% MB.

60 **OL BLOSSOM GUNNER 95 ET**
 Bull calved: 1/4/23 tattoo: 95L ET reg: AMGV1583605
 Balancer GHGF LONE STAR D027
 MCCA GUNNER 947G
 MCCA CLEMENTINE 5147C
 PHG BAKKEN Z35
 PHG BLOSSOM B83
 WVR LILAH 102L ET

CE	BW	WW	YW	Milk	TM	Birth Wt	0
+10	+4.4	+83	+131	+25	+67	205 Wt	35
CW	IMF	RE	CEM	YG	F	Scrotal	37
+26	+0.52	+0.63	+5	-0.2	-0.03	PAP	

94% • BLK • P
 95L - Gunner ET. Out of the great PHG Blossom cow. A performance bull. Clean, style and completeness. Travels out well. Ranks top 10% WW, 10% YW, 20% MB.

63 **OL ANDY LIFE 815G**
 Bull calved: 1/11/23 tattoo: 815L reg: AMGV1582808
 Balancer DCH HILLE Y 109
 DCH BIG ANDY D672
 DCH HILLE 4266
 EGL LIFELINE B101
 301 BI ET
 HYEK BLK IMPACT

CE	BW	WW	YW	Milk	TM	Birth Wt	85
+10	+0.5	+69	+101	+21	+55	205 Wt	40
CW	IMF	RE	CEM	YG	F	Scrotal	39
+34	+0.12	+0.49	+5	-0.1	-0.02	PAP	

75% • BLK • P
 815L - Big Andy. 75% Gelbvieh. A bull with a little more leg under him. Clean built. Great feet and legs.

64 OL ANDY LIFE 255						
Balancer Bull calved: 1/11/23 tattoo: 255L reg: AMGV1582844						
DCH HILLE Y 109						
DCH BIG ANDY D672						
DCH HILLE 4266						
EGL LIFELINE B101						
255F CTR GOOD NIGHT						
CE	BW	WW	YW	Milk	TM	Birth Wt
+18	-2.7	+69	+100	+22	+56	74
						205 Wt
						35
						Scrotal
						35
						PAP
CW	IMF	RE	CEM	YG	F	
+29	+0.15	+0.4	+8	-0.07	-0.01	

75% • BLK • P
255L - Big Andy. 75% Gelbvieh. Recommended for heifers. Moderate, clean, smooth made bull. Ranks in the top 10% BW. Great maternal genetics and disposition.



65 OL ANDY EAGLE 834						
Balancer Bull calved: 1/29/23 tattoo: 834L reg: AMGV1582858						
DCH HILLE Y 109						
DCH BIG ANDY D672						
DCH HILLE 4266						
SLGN WIDELOAD 920W						
EGL PHOENIX ET						
FREEDOM						
CE	BW	WW	YW	Milk	TM	Birth Wt
+20	-4.5	+67	+97	+22	+55	70
						205 Wt
						34
						Scrotal
						36
						PAP
CW	IMF	RE	CEM	YG	F	
+30	+0.31	+0.41	+10	-0.1	-0.02	

75% • BLK • P
834L - Big Andy. Recommended for heifers. 75% Gelbvieh. Moderate with a deep rib. Ranks in top 1% BW and CED. Ranks in the top half for marbling.

67 OL HALLS FP 058J-580L						
Balancer Bull calved: 1/1/23 tattoo: 580L reg: AMGV1582854						
BUBS SOUTHERN CHARM						
MCCA HALLS CROSSING 024H						
KALA KALINA 0027X						
DBRG MR PAYEEIGHT 710						
058G-580J						
BGR FRONTPAGE 114W						
CE	BW	WW	YW	Milk	TM	Birth Wt
+18	-3.7	+63	+94	+24	+57	69
						205 Wt
						38
						Scrotal
						35
						PAP
CW	IMF	RE	CEM	YG	F	
+28	+0.47	+0.43	+10	-0.07	+0	

50% • BLK • P
580L - Halls. Recommended for heifers. Ranks in the top 4% CED and BW, 25% in marbling. Complete with thickness, volume, muscle and natural good looks. Great cow family with perfect udders and great fertility. Disposition and feet are a plus.

66 OL HALLS LIFE 233						
Balancer Bull calved: 1/12/23 tattoo: 233L reg: AMGV1582820						
BUBS SOUTHERN CHARM						
MCCA HALLS CROSSING 024H						
KALA KALINA 0027X						
BGR MR FRONT PAGE 114W						
003E 303G FP						
KCF BENNETT Y6						
CE	BW	WW	YW	Milk	TM	Birth Wt
+16	-2	+64	+98	+21	+54	79
						205 Wt
						35
						Scrotal
						38
						PAP
CW	IMF	RE	CEM	YG	F	
+23	+0.51	+0.38	+8	-0.06	+0	

44% • BLK • P
233L - Halls. Recommended for heifers. Moderate, clean made with a good top. Ranks in the top 15% CED, 20% BW and 20% in marbling. Sound mover.

68 OL HALLS LIFE 541						
Balancer Bull calved: 1/11/23 tattoo: 541L reg: AMGV1582829						
BUBS SOUTHERN CHARM						
MCCA HALLS CROSSING 024H						
KALA KALINA 0027X						
EGL LIFELINE B101						
542G						
HYEK BLK IMPACT						
CE	BW	WW	YW	Milk	TM	Birth Wt
+15	-1.7	+66	+99	+24	+58	79
						205 Wt
						34
						Scrotal
						37
						PAP
CW	IMF	RE	CEM	YG	F	
+31	+0.38	+0.7	+7	-0.13	+0	

53% • BLK • P
541L - Halls. Recommended for heifers. Moderate, clean made bull with good feet and legs. Great maternal values. Ranks in the top 20% in CED and BW. Top half in MB.



MCCA HALLS CROSSING 024H

MUNROE SEED inc.
PIONEER BRAND · PRODUCTS | Science with Service
Delivering Success™



71
Balancer Bull calved: 1/14/23 tattoo: 76L reg: AMGV1582855
BUBS SOUTHERN CHARM
MCCA HALLS CROSSING 024H
KALA KALINA 0027

BLACK MARBLE TENDER

761 G DITKA

DITKA

CE	BW	WW	YW	Milk	TM	Birth Wt	205 Wt	Scrotal	PAP
+14	-0.9	+71	+111	+19	+55	82		35	40
CW	IMF	RE	CEM	YG	F				
+27	+0.44	+0.66	+8	-0.17	-0.01				

50% • BLK • P

76L - HALLS. This herd bull is thick and stout with long length of spine. Moderate frame with correct feet. Great carcass value.

69
Balancer Bull calved: 1/21/23 tattoo: 885L reg: AMGV1583945
BUBS SOUTHERN CHARM
MCCA HALLS CROSSING 024H
KALA KALINA 0027X

BGGR BLK PAYLOAD 6152

885J

KCF BENNETT Y6

CE	BW	WW	YW	Milk	TM	Birth Wt	205 Wt	Scrotal	PAP
+15	-2.7	+64	+98	+22	+55	63		33	35
CW	IMF	RE	CEM	YG	F				
+35	+0.48	+0.63	+8	-0.05	+0.02				

51% • BLK • P

885L - Halls. Moderate bull out of a first calf heifer. Ranks in the top 10% BW.



72
Balancer Bull calved: 1/7/23 tattoo: 1191L reg: AMGV1582818
TAU MR RESOURCE 102E
DJS HOWARD 101H
CIRS 12LW ET

KCF BENNETT ABSOLUTE

1191-192

EGL LOCK & LOAD X415

CE	BW	WW	YW	Milk	TM	Birth Wt	205 Wt	Scrotal	PAP
+10	+0.7	+72	+110	+25	+61	80		33	40
CW	IMF	RE	CEM	YG	F				
+41	+0.19	+0.38	+4	-0.03	-0.02				

41% • BLK • P

1191L - Howard. A real stand out, extreme power, thickness and dimension. Big footed with great bone and legs. Strides out nice. Maternal value.



70
Balancer Bull calved: 2/18/23 tattoo: 229L reg: AMGV1583942
BUBS SOUTHERN CHARM
MCCA HALLS CROSSING 024H
KALA KALINA 0027X

WMF MARBLE TENTER

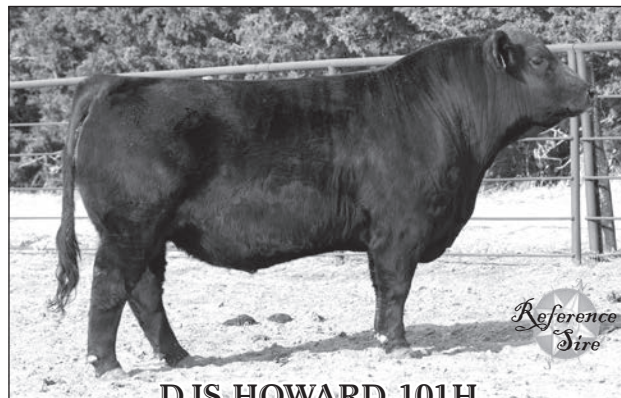
2249C 229J

CYR GOOD NIGHT 715T

CE	BW	WW	YW	Milk	TM	Birth Wt	205 Wt	Scrotal	PAP
+16	-2.4	+65	+99	+20	+54	75		33	39
CW	IMF	RE	CEM	YG	F				
+23	+0.49	+0.64	+8	-0.22	-0.03				

50% • BLK • P

229L - Halls. Recommended for heifers. Thick made with good balance and a good top. Great feet and legs. Out of great cow family. Ranks in the top 15% CED and BW, 20 % in marbling. A real stand out.



DJS-HOWARD-101H



73 **OL HOWARD 0867**
 Bull calved: 1/12/23 tattoo: 8670L reg: AMGV1587475
 TAU MR RESOURCE 102E
DJS HOWARD 101H
 CIRS 12LW ET

867						Birth Wt	85
DANNYBOY						205 Wt	
CE	BW	WW	YW	Milk	TM	Scrotal	34
+9	+1.2	+76	+114	+18	+55	PAP	34
CW	IMF	RE	CEM	YG	F		
+37	+0.24	+0.47	+4	-0.07	-0.01		

50% • BLK • P
 0867L - Howard. A performance bull with volume and rib shape to sire easy fleshing calves. Travel out nice and correct.

75 **OL CAROLINA 304 241 ET**
 Bull calved: 2/6/23 tattoo: 304L ET reg: AMGV1582901
 JBOB CAROLINA CPR
JBOB CAROLINA FORTUNE 2564J ET
 DDM MR SHERMAN TANK

BCC BUSGWACKER						Birth Wt	0
B MISS SALLY 301						205 Wt	
STIZ ALLIANCE 6595						Scrotal	34
CE	BW	WW	YW	Milk	TM	PAP	38
+10	+1.2	+64	+96	+30	+62		
CW	IMF	RE	CEM	YG	F		
+27	+0.36	+0.41	+4	-0.13	-0.03		

50% • BLK • P
 304L - Carolina Fortune ET. Well balanced bull. Moderate framed, thick ended and deep ribbed. Has a lot of eye appeal and great maternal values.

74 **OL WASATCH 2033CE**
 Bull calved: 1/11/23 tattoo: 2033L reg: AMGV1584058
 BLK PAYLOAD 6152
WASATCH 305 ET
 CTR POLL STAR

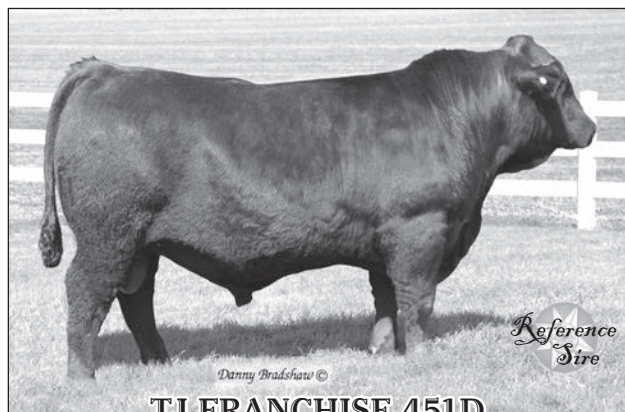
LAZY TV WATCHMAN						Birth Wt	92
3203CE						205 Wt	
BENNETT ABSOLUTE						Scrotal	35
CE	BW	WW	YW	Milk	TM	PAP	38
+10	+1.6	+76	+115	+19	+57		
CW	IMF	RE	CEM	YG	F		
+35	+0.53	+0.47	+5	-0.02	+0.01		

5000% • BLK • P
 2033L - WASATCH. A nice, attractive, moderate bull - a real standout. Correct feet and good bone. He is stout and thick with a heavy rear quarter. He ranks in the top 15% in marbling.

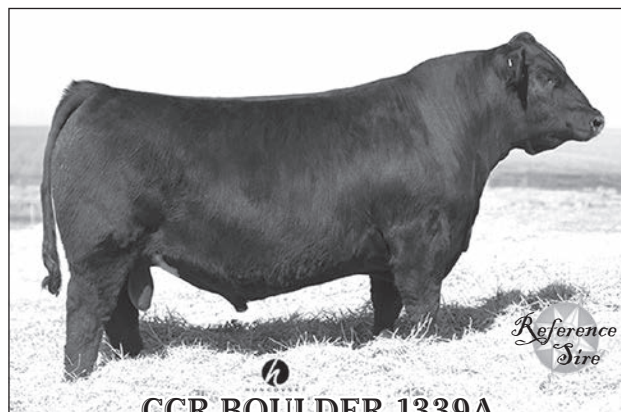
76 **OL BLACK IMPACT 103 ET**
 Bull calved: 2/6/23 tattoo: 103L ET reg: AMGV1582902
 HYL BLACK IMPULSE
HYEK BLACK IMPACT 3960N
 FLYING H EXTRA

BCC BUSGWACKER						Birth Wt	0
B MISS SALLY 301						205 Wt	
STIZ ALLIANCE 6595						Scrotal	35
CE	BW	WW	YW	Milk	TM	PAP	37
+11	+3	+65	+94	+27	+59		
CW	IMF	RE	CEM	YG	F		
+27	+0.23	+0.39	+4	-0.05	+0		

50% • BLK • P
 103L - Black Impact ET. Clean fronted, moderate framed with power, thickness and dimension. Good feet and legs. Great maternal values.



TJ-FRANCHISE 451D



CCR BOULDER 1339A

SimAngus Bulls

77

SimAngus

CFS FLAT TOP L 302

Bull calved: 2/1/23 tattoo: L 302 reg: 4268796

CONNEALY BLACK GRANITE

WERNER FLAT TOP 4136

WERNER LADY 0304

HOOKS YELLOWSTONE 97Y

CFS MANDY J110

CFS MANDY Z232

CE	BW	WW	YW	Milk	Birth Wt
+15.3	-0.2	+84.7	+142.7	+32.5	69
CW	YG	IMF	RE	API	TI
+39.4	-0.14	+0.48	+0.61	+151.9	732

Scrotal	PAP
37	35

1/2 SM 1/2 AN. Polled and black. Out of a 1st calf heifer by the calving ease bull Werner Flat Top and a Hooks Yellowstone dam. Hooks Yellowstone is noted for calving ease and maternal strengths.

78

SimAngus

CFS MR BOLDER L 303

Bull calved: 1/4/23 tattoo: L 303 reg: 4268798

HOOVER DAM

CCR BOULDER 1339A

CCR MS L TAYLOR 1339Y

WERNER FLAT TOP 4136

CFS GENTRY J122

CFS UPTOWN GIRL D 618

CE	BW	WW	YW	Milk	Birth Wt
+15.1	-1.4	+74.3	+120.3	+28.1	73
CW	YG	IMF	RE	API	TI
+21.4	-0.31	+0.52	+0.67	+149.8	476

Scrotal	PAP
36	33

1/2 SM 1/2 AN. Polled and black. By the calving ease bull CCR Boulder and a Werner Flat Top Dam. Gentlemen, that's calving ease top and bottom.

79

SimAngus

CFS ROLLING STONE L 304

Bull calved: 1/9/23 tattoo: L 304 reg: 4268799

HOOVER DAM

CCR BOULDER 1339A

CCR MS L TAYLOR 1339Y

ACW IRONHIDE 395Y

CFS MEGAN J 139

CFS MEGAN F 804

CE	BW	WW	YW	Milk	Birth Wt
+14.4	-1.3	+71.7	+112	+23.1	79
CW	YG	IMF	RE	API	TI
+24.9	-0.27	+0.39	+0.64	+137.2	658

Scrotal	PAP
38	32

1/2 SM 1/2 AN. This polled and black bull is by CCR Boulder and out of a real nice Ironhide 1st calf heifer. Ironhide females have abundant muscle and eye appeal.

80

SimAngus

CFS FACE CARD L 305

Bull calved: 1/12/23 tattoo: L 305 reg: 4268838

HOOVER DAM

CCR BOULDER 1339A

CCR MS L TAYLOR 1339Y

WERNER FLAT TOP 4136

CFS ELLIE J111

CFS MISS ELLIE Y 118

CE	BW	WW	YW	Milk	Birth Wt
+14	-0.5	+77.1	+127.1	+27.0	80
CW	YG	IMF	RE	API	TI
+25.3	-0.31	+0.49	+0.69	+147.5	686

Scrotal	PAP
38	40

1/2 SM 1/2 AN. Polled and black and another one of those good CCR Boulder and Werner Flat Top offspring. Exhibits eye appeal, individual performance and soundness.

81

SimAngus

CFS THUNDER L 306

Bull calved: 1/15/23 tattoo: L 306 reg: 4268833

HOOKS BLACK HAWK 50B

HOOKS EAGLE 6E

HOOKS CRYSTAL 1C

ACW IRONHIDE 395Y

CFS MADDIE J118

CFS MADDIE F 832

CE	BW	WW	YW	Milk	Birth Wt
+15.5	-2.9	+77.3	+121.1	+21.0	617
CW	YG	IMF	RE	API	TI
+33.4	-0.32	+0.45	+0.98	+149.1	37

Scrotal	PAP
37	60

5/8 SM 3/8 AN. We are excited about this Hooks Eagle calf out of an Ironhide 1st calf heifer. He has calving ease, low birth weight and is easy on the eyes.

82

SimAngus

CFS FLASH CARD L 308

Bull calved: 1/23/23 tattoo: L 308 reg: 4268816

CCR COWBOY CUT 5048Z

TJ FRANCHISE 451D

TJ MISS NET WORTH U11

CCR BOULDER 1339A

CFS MADDIE F832

CFS MISS MADDIE B 401

CE	BW	WW	YW	Milk	Birth Wt
+13.4	-0.5	+63.7	+98.5	+18.4	609
CW	YG	IMF	RE	API	TI
+19.2	-0.12	+0.39	+0.39	+131.6	34

Scrotal	PAP
34	42

1/2 SM 1/2 AN. Polled and black. We used TJ Franchise on our 1/2 blood cows. Has calving ease, good growth and a quiet disposition.

83

SimAngus

CFS HOMESTEAD L 322

Bull calved: 2/14/23 tattoo: L 322 reg: 4268841

HSR F 20 FRANCHISE STAR

HSR H 24 VOW

HSR F 99 PRIMERA

CLRS AFTER SHOCK 604A

CFS FALLON E 722

CFS JORDANELLE W912

CE	BW	WW	YW	Milk	Birth Wt
+11.3	+0.5	+69.8	+108.2	+20	654
CW	YG	IMF	RE	API	TI
+27.9	-0.14	+0.25	+0.4	+122.2	37

Scrotal	PAP
37	36

1/2 SM 1/2 AN. Polled and heterozygous black. He exhibits eye appeal, good growth, good feet and legs and a quiet disposition.

84

SimAngus

CFS TROOPER L 327

Bull calved: 2/7/23 tattoo: L 327 reg: 4268809

HOOKS EAGLE 6E

TJ GOLD 274G

TJ 12C

CCR BOULDER 1339A

CFS CALLIE H 002

CFS CALLIE F 802

CE	BW	WW	YW	Milk	Birth Wt
+16.4	-3.3	+64.3	+101.2	+22.6	594
CW	YG	IMF	RE	API	TI
+17	-0.29	+0.5	+0.67	+148.7	31

Scrotal	PAP
31	35

3/4 SM 7/32 AN 1/32 AR. Polled and black. This bull by TJ Gold exhibits some of the best calving ease of all the bulls. Has a quiet disposition, is heavy muscled and has eye appeal.

85 **CFS LASH POINT L 330**
 Bull calved: 2/9/23 tattoo: L 330 reg: 4268843
 SimAngus HSR F 20 FRANCHISE STAR
 HSR H 24 VOW
 HSR F 99 PRIMERA

STF SHOCKING DREAM SJ14					Birth Wt	
CFS BLACK SATIN D 645					205 Wt	664
CFS WHITNEY X 014					Scrotal	36
CE	BW	WW	YW	Milk	PAP	34
+9.8	+1.8	+73.1	+111	+20.8		
CW	YG	IMF	RE	API	TI	
+26.7	-0.23	+0.15	+0.58	+116.6	+70.8	

1/2 SM 1/2 AN; Polled and Hererozygous black. If you like a little chrome this bull has a spot in the forehead for you. His dam goes back to our show string and he exhibits eye appeal and growth.

88 **S7 RAPTOR 250**
 Bull calved: 12/15/22 tattoo: K250 reg: 4307254
 SimAngus Hook's Eagle 6E
 RAML RAPTOR 9693G
 RAML FRONT & CENTER 693D

SYDGEN ENHANCE					Birth Wt	80
S7 BLACK PEPPER G923					205 Wt	717
S7 JALAPENO					Scrotal	41
CE	BW	WW	YW	Milk	PAP	38
+12.8	-0.3	+79	+133.3	+26.8		
CW	YG	IMF	RE	API	TI	
+41.3	-0.25	+0.48	+0.82	+150	+86.9	

5/8 SM bull. You will like the way this bull looks.

86 **CFS CRUISER L 336**
 Bull calved: 2/13/23 tattoo: L 336 reg: 4268827
 SimAngus HSR F 20 FRANCHISE STAR
 HSR H 24 VOW
 HSR F 99 PRIMERA

HOOKS YELLOWSTONE 97Y					Birth Wt	
CFS ASHLEY E 732					205 Wt	685
CFS TRUE BET Y 150					Scrotal	38
CE	BW	WW	YW	Milk	PAP	37
+10.6	+1.4	+77.7	+120.6	+23.6		
CW	YG	IMF	RE	API	TI	
+33.3	-0.18	+0.28	+0.58	+127.8	+77.6	

1/2 SM 1/2 AR. Polled and heterozygous black. His dam is a Hooks Yellowstone daughter with a beautiful udder and quiet disposition.



89 **S7 RAPTOR 247**
 Bull calved: 11/29/22 tattoo: K247 reg: 4307257
 SimAngus Hook's Eagle 6E
 RAML RAPTOR 9693G
 RAML FRONT & CENTER 693D

SAND RANCH HAND					Birth Wt	79
CFS SWEET DREAMS A 328					205 Wt	859
CFS RED DREAM X 024					Scrotal	39
CE	BW	WW	YW	Milk	PAP	36
+13.6	-0.6	+85.9	+131.8	+21.1		
CW	YG	IMF	RE	API	TI	
+26.1	-0.44	+0.22	+0.96	+149.4	+88	

3/4 SM bull. Calving ease numbers and has always been the biggest in the pen.

87 **CFS CROSS CUT L 345**
 Bull calved: 2/23/23 tattoo: L 345 reg: 4268826
 SimAngus HSR F 20 FRANCHISE STAR
 HSR H 24 VOW
 HSR F 99 PRIMERA

TRIPLE C BETTIS S 72J					Birth Wt	
CFS ABBIE B432					205 Wt	689
CFS ABBIES DREAM X 016					Scrotal	40
CE	BW	WW	YW	Milk	PAP	37
+11.5	+1.1	+71.6	+106.9	+23.1		
CW	YG	IMF	RE	API	TI	
+21.9	-0.23	+0.18	+0.56	+122.2	+71.9	

1/2 SM 1/2 AR. Polled and red. This dark red bull is easy on the eyes, has good feet and legs and a quiet disposition. His grand dam is a Dream On daughter.

90 **S7 GOLDMINE 241**
 Bull calved: 11/20/22 tattoo: K 241 reg: 4307252
 SimAngus WLE POWER STROKE
 SS GOLDMINE L42
 GW MISS LUCKY BUCK 858G

BAR R JET BLACK 5063					Birth Wt	83
S7 JETS DREAM					205 Wt	741
S7 DREAM ZINGER					Scrotal	38
CE	BW	WW	YW	Milk	PAP	42
+13.3	+0.9	+69.9	+99.9	+23.0		
CW	YG	IMF	RE	API	TI	
+19.8	-0.35	+0.03	+0.63	+120.8	+70.2	

3/4 SM bull out of a Jet Black half blood dam.

91 **S7 Raptor 240**
 Bull calved: 11/15/22 tattoo: K 240 reg: 4307265
 SimAngus Hook's Eagle 6E
RAML RAPTOR 9693G
 RAML FRONT & CENTER 693D

CFS JASPER F 827					Birth Wt	79
S7 RED CONNECTION					205 Wt	730
S7 Miss CONNECTION					Scrotal	39
CE	BW	WW	YW	Milk	PAP	38
+12.8	-0.5	+73.3	+112.4	+25.6		
CW	YG	IMF	RE	API	TI	
+30.8	-0.34	+0.34	+0.9	+143.8	+81.8	

5/8 SM bull. Heterozygous black.



92 **S7 BLACK ICE 248**
 Bull calved: 12/7/22 tattoo: K 248 reg: 4307263
 SimAngus SYDGEN ENHANCE
S7 BLACK ICE G9632
 S7 SHEAR RED D632

CDI RIMROCK 325Z					Birth Wt	80
S7 RIMROCK F 845					205 Wt	769
S7 RED RIVER D636					Scrotal	37
CE	BW	WW	YW	Milk	PAP	37
+12.9	-0.5	+78.1	+123.9	+26.4		
CW	YG	IMF	RE	API	TI	
+31.4	-0.23	+0.46	+0.73	+142.2	+85.8	

5/8 SM. Red bull.

94 **SAR True North K33**
 Bull calved: 12/26/22 tattoo: K33 reg: 4279566
 SimAngus GSC GCCO Dew North 102C
LLW Card True North G71
 Cox's Joys Princess 711E

Lazy JB Dinero					Birth Wt	91
SAR Barbara V25					205 Wt	711
SAR Miss New Design H5					Scrotal	na
CE	BW	WW	YW	Milk	PAP	33
+14.1	+0	+69.1	+102.4	+20.3		
CW	YG	IMF	RE	API	TI	
+28.3	-0.16	+0.3	+0.62	+115.2	+72.8	

1/2 SM 1/2 AN. K33 is a half blood SimAngus bull that puts a lot of things together right. One look at his sale pic and he'll have your attention. His dam is a big bodied, easy fleshing, perfect uddered cow that is in her prime. Run this bull at any elevation with a PAP score of 33.



93 **SAR True North K23**
 Bull calved: 12/25/22 tattoo: K23 reg: 4279565
 SimAngus GSC GCCO Dew North 102C
LLW Card True North G71
 Cox's Joys Princess 711E

Lazy JB Dinero					Birth Wt	84
SAR Jacey T65					205 Wt	693
SAR Jacey K5					Scrotal	38
CE	BW	WW	YW	Milk	PAP	35
+15.2	-1.1	+70.6	+103.5	+20.4		
CW	YG	IMF	RE	API	TI	
+25.2	-0.16	+0.29	+0.59	+120.9	+74.9	

1/2 SM 1/2 AN. Lots 93-95 are 3/4 sibs. For this calf crop, we looked hard for a purebred Simmy bull that we thought would click with Angus cows. We believe we found that bull in LLW Card True North! He definitely stamps them with muscle, length of body, bone and foot size. These guys are built to travel. If you like the bulls, you'll love the females. These bulls will be easy to find in our pens. PAP score of 35 at 7,200 feet.

95 **SAR True North K39**
 Bull calved: 12/26/22 tattoo: K39 reg: 4279567
 SimAngus GSC GCCO Dew North 102C
LLW Card True North G71
 Cox's Joys Princess 711E

Lazy JB Dinero					Birth Wt	89
SAR Emblynette V99					205 Wt	677
Spruce Mountain Emblynette 2134					Scrotal	41
CE	BW	WW	YW	Milk	PAP	33
+15.5	-0.5	+76.9	+118.8	+20.7		
CW	YG	IMF	RE	API	TI	
+30	-0.16	+0.3	+0.68	+125.5	+78.7	

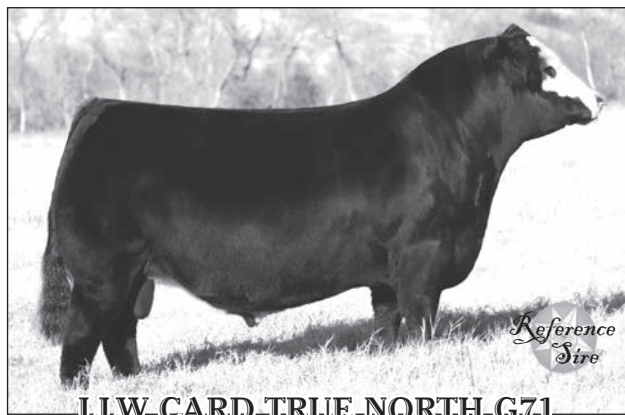
1/2 SM 1/2 AN. K39's dam goes back to the famed Emblynette cow family from Schaff's Angus Valley in ND. Her maternal brother is the lot 2 Barricade son in this sale. Quality runs deep here. Another great PAP score of 33.



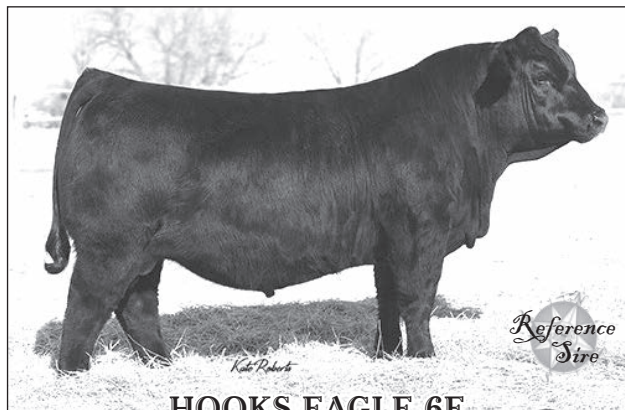
96 **SAR True North K52**
 Bull calved: 12/27/22 tattoo: K52 reg: 4279568
 SimAngus GSC GCCO Dew North 102C
 LLW Card True North G71
 Cox's Joys Princess 711E

Connealy Courage 25L						Birth Wt	84
SAR Serena T34						205 Wt	752
SAR Serena P13						Scrotal	40
CE	BW	WW	YW	Milk		PAP	36
+15.8	-0.8	+75.9	+112.5	+23.4			
CW	YG	IMF	RE	API	TI		
+28.9	-0.19	+0.2	+0.71	+124.5	+75.9		

1/2 SM 1/2 AN. K52 puts a little different twist to the bottom side of the pedigree. His dam is a Connealy Courage daughter. We used Courage for several years on heifers and cows. Those calves came easy, had some muscle expression and the daughters have made great cows. Patterned like the other True North sons, including a PAP score of 36.



LLW-CARD-TRUE NORTH-G71



HOOKS-EAGLE-6E

Quest of the West **Simmental Bulls** — Cattle Sale —

97 **CFS FOOT NOTE L 310**
 Bull calved: 2/27/23 tattoo: L 310 reg: 4268823
 Simmental HOOKS BLACK HAWK 50B
 HOOKS EAGLE 6E
 HOOKS CRYSTAL 1C

HOOKS YELLOWSTONE 97Y						Birth Wt	65
CFS MADIE E 710						205 Wt	607
CFS MISS MANDY Z232						Scrotal	34
CE	BW	WW	YW	Milk		PAP	38
+13.3	-0.3	+88.6	+135.4	+22.3			
CW	YG	IMF	RE	API	TI		
+38.3	-0.37	+0.38	+1.06	+157.7	+93.1		

Purebred SM. Polled and Black. Hooks Eagle bulls are in demand across the country. This calf is out of an excellent Hooks Yellowstone daughter and his EPD's show that he has excellent calving ease and a minus birthweight and travels on a good set of wheels.

98 **CFS LEGACY L 317**
 Bull calved: 2/1/23 tattoo: L 317 reg: 4268845
 Simmental NICHOLS BLK DESTINY D 12
 NICHOLS LEGACY G151
 NICHOLS DEBRA D 81

CCR BOULDER 1339A						Birth Wt	
CFS DARLIN G 913						205 Wt	567
CFS MS DARLIN C534						Scrotal	34
CE	BW	WW	YW	Milk		PAP	31
+13.1	-2.2	+53.5	+74.6	+20.9			
CW	YG	IMF	RE	API	TI		
+12.7	-0.5	+0.25	+0.76	+141.5	+71.9		

Purebred SM. Polled and Black. The sire of this bull is one of the old standbys of the Simmental breed. This calf has excellent calving ease EPD's and a -2.2 birthweight. His dam is by CCR Boulder and you all know what good females Boulder produces.



99 **S7 POWER DRIVE 245**
 Bull calved: 11/23/22 tattoo: K 245 reg: 4307251
 Simmental WLE POWER STROKE
 HC POWER DRIVE 88 H
 KAPPES LADY IRISH F88

HOOKS SHEAR FORCE 38K						Birth Wt	82
CFS LITTLE BEAR Y 147						205 Wt	711
CFS ASPEN U R 460						Scrotal	39
CE	BW	WW	YW	Milk		PAP	34
+11.4	+1.4	+61.8	+97.3	+26			
CW	YG	IMF	RE	API	TI		
+19.2	-0.46	+0	+0.97	+125.3	+66.1		

Purebred bull that has all the maternal you could ask for. Dam is 13 years old now and never misses. A lot of pedigree in this bull.

Angus Heifers



Sorensen Angus Ranch is offering another fancy set of replacement heifers. We're proud of the cow families that are represented here.

These heifers have not been pushed, but have been developed right along with our own replacements on a high roughage ration. They are ready to breed whenever the time is right for you.



102
Angus

102
Angus

SAR Laney B12

Cow calved: 12/25/22 tattoo: B12 reg: AAA 20768525

Mohnen Substantial 272

Sitz Stellar 726D

SITZ Pride 200B

LA Net Worth 954

Rafter 1 Laney Freedom B45

SAR Miss New Design J3

CE	BW	WW	YW	Milk	\$EN	Birth Wt	205 Wt
+8	+0.6	+57	+107	+26	-1	75	599
CW	IMF	RE	Fat	\$W	\$F	\$B	PAP
+35	+0.58	+0.6	+0.003	+54	+87	+136	

This heifer is the complete package and has cow written all over her. She's got the right combination of look, muscle, center of body and stands on great feet and legs. We have retained a full sister.



100
Angus

100
Angus

SAR Paisley B4

Cow calved: 11/26/22 tattoo: B4 reg: AAA 20768498

Connealy Confidence Plus

E&B Plus One

E&B Lady 1023 Precision 936

Circle L Gus

SAR Paisley Z16

SAR Paisley W22

CE	BW	WW	YW	Milk	\$EN	Birth Wt	205 Wt
+10	+0.4	+61	+108	+22	+4	72	684
CW	IMF	RE	Fat	\$W	\$F	\$B	PAP
+	+	+	+	+52	+81	+	

Long bodied, broody and feminine daughter of the popular Plus One bull and a first calf heifer. Plus One x Gus x Big Sky x Freedom - very maternal pedigree that goes back to one of our all time favorite cows, M16. 684 lb. actual WW.



103
Angus

103
Angus

SAR Jacey B34

Cow calved: 12/27/22 tattoo: B34 reg: AAA 20768523

Sitz Stellar 726D

Sitz Resilient 10208

Sitz Miss Burgess 1856

S A V Rainfall 6846

SAR Jacey X40

SAR Jacey K5

CE	BW	WW	YW	Milk	\$EN	Birth Wt	205 Wt
+6	+0.7	+63	+114	+23	-6	79	592
CW	IMF	RE	Fat	\$W	\$F	\$B	PAP
+	+	+	+	+53	+83	+	

Resilient x Rainfall - maternal pedigree with a great cow family to back it up. Sharp fronted and feminine.

101
Angus

SAR Missie B25

Cow calved: 12/26/22 tattoo: B25 reg: AAA 20768499

Connealy Confidence Plus

E&B Plus One

E&B Lady 1023 Precision 936

Circle L Game Day 82A

SAR Missie W61

SAR Missie T33

CE	BW	WW	YW	Milk	\$EN	Birth Wt	205 Wt
+2	+1.6	+59	+105	+22	-17	79	599
CW	IMF	RE	Fat	\$W	\$F	\$B	PAP
+38	+0.44	+0.38	+0.034	+50	+83	+120	

Another Plus One daughter that has tons of volume and capacity, is nice fronted and still has some power to round out the package.



104 **SAR Serena B44**
 Angus Cow calved: 12/27/22 tattoo: B44 reg: AAA 20768524
 Sitz Stellar 726D
Sitz Resilient 10208
 Sitz Miss Burgess 1856

R B Tour Of Duty 177							Birth Wt	79
SAR Serena V41							205 Wt	644
SAR Miss in Focus J18							PAP	
CE	BW	WW	YW	Milk	\$EN			
+6	+1.1	+69	+117	+27	-21			
CW	IMF	RE	Fat	\$W	\$F	\$B		
+40	+0.75	+0.56	+0.001	+65	+83	+140		

Resilient daughter out of a great young cow that has been a producer having a WR on her first 5 calves at 106. Dam is pathfinder.



106 **SAR Paisley B56**
 Angus Cow calved: 12/29/22 tattoo: B56 reg: AAA 20768496
 S Chisum 6175
Circle L Gus
 Circle L PRIDE X097

Musgrave Sky High 1535							Birth Wt	80
SAR Paisley Y41							205 Wt	587
SAR Paisley U27							PAP	
CE	BW	WW	YW	Milk	\$EN			
+9	+1.1	+57	+97	+24	+10			
CW	IMF	RE	Fat	\$W	\$F	\$B		
+52	+0.36	+0.67	+0.054	+55	+106	+141		

Gus x Sky High x Courage x Freedom - great pedigree but whenever one has this phenotype, they get our attention! Dam is off to a great start with a WR of 109 on her first two calves.

105 **SAR Serena B54**
 Angus Cow calved: 12/28/22 tattoo: B54 reg: AAA 20831975
 Connealy Comrade 1385
McConnell Altitude 3114
 MA Beauty 0156

TC Freedom 104							Birth Wt	81
SAR Forever Lady N17							205 Wt	577
Riverbend Forever Lady R106							PAP	
CE	BW	WW	YW	Milk	\$EN			
+5	+1.7	+58	+102	+27	-1			
CW	IMF	RE	Fat	\$W	\$F	\$B		
+31	+0.45	+0.21	+0.039	+60	+76	+111		

This heifer's dam and the dam of the lot 18 bull are flush sisters. With both lots being sired by Altitude, they are very close to being full sibs. Long bodied, nice fronted daughter from our Forever Lady cow family.



107 **SAR Lass B57**
 Angus Cow calved: 12/30/22 tattoo: B57 reg: AAA 20768520
 Sitz Stellar 726D
Sitz Barricade 632F
 SITZ Barbarmere Nell 765D

S A V Pioneer 7301							Birth Wt	81
Azteca Lass AZ10							205 Wt	583
Azteca Lass AZ54							PAP	
CE	BW	WW	YW	Milk	\$EN			
+2	+3	+67	+117	+19	-10			
CW	IMF	RE	Fat	\$W	\$F	\$B		
+49	+0.59	+0.51	+0.052	+50	+94	+139		

Moderate framed Barricade daughter out of a 14-year old Pioneer cow that has calved towards the front of the herd every year.

QUEST
 of the **WEST**

**"Faith is taking the first step,
 even when you don't see
 the whole staircase."**

- Martin Luther King Jr.

108

Angus

SAR Paisley B77

Cow calved: 01/31/23 tattoo: B77 reg: AAA 20768506

Kramers Apollo 317

Lazy JB Desperado 8125

Lazy JB Queen Sheba 125

Connealy Courage 25L

SAR Paisley T38

SAR Paisley P7

CE	BW	WW	YW	Milk	\$EN	Birth Wt	205 Wt
+8	+1.3	+58	+100	+27	+0	81	591
CW	IMF	RE	Fat	\$W	\$F	PAP	
+	+	+	+	+54	+75		+

The Desperado daughters are making great young cows. This one should be no different. Backed by a great cow family, she puts together the pieces you want in a replacement female.

110

Angus

SAR Serena B96

Cow calved: 6/1/23 tattoo: B96 reg: AAA 20851826

Kramers Apollo 317

Lazy JB Desperado 8125

Lazy JB Queen Sheba 125

Ellingson Top Shelf 5050

SAR Serena Y6

SAR Serena W25

CE	BW	WW	YW	Milk	\$EN	Birth Wt	205 Wt
+9	+1.3	+66	+118	+25	-15	75	649
CW	IMF	RE	Fat	\$W	\$F	PAP	
+	+	+	+	+56	+85		+

By far the youngest heifer in the offering, but she is nice and would work great for a later calving operation. Lots of quality here.

109

Angus

SAR Valees B78

Cow calved: 02/23/23 tattoo: B78 reg: AAA 20768507

Kramers Apollo 317

Lazy JB Desperado 8125

Lazy JB Queen Sheba 125

S A V Brilliance 8077

Azteca Valees AZ14

C S Valees Liberty 305

CE	BW	WW	YW	Milk	\$EN	Birth Wt	205 Wt
+6	+1.4	+57	+100	+33	-8	75	564
CW	IMF	RE	Fat	\$W	\$F	PAP	
+42	+0.34	+0.59	+0.034	+64	+92		+126

Another feminine made Desperado daughter out of a Brilliance dam who is also the granddam of the lot 10 herd sire prospect.

*Thanks for Coming
to the Sale!*

**Quest
of the West**
— Cattle Sale —



CINCH SORENSEN 385-535-1250

PIPE FENCE	MACHINERY BUCKETS
GATES	CUSTOM FABRICATION
REPAIRS	TRAILERS + MORE!
CORRALS	SPANISH FORK, UTAH



- GENERAL ENGINEERING & BUILDING
- AG SPECIALIZED CONTRACTOR
- COUNTY SUBDIVISION DEVELOPMENT
- COMMERCIAL SITE WORK
- ALL TYPES OF PIPE INSTALLATION
- LAND LEVELING
- DITCH & BUILDING PADS
- NEW ROAD & ASPHALT PREPARATION
- UNDERGROUND ELECTRICAL
- LEVEL 3 STATE WASTE WATER CERTIFICATION

BRIAN SORENSEN
801-372-0762
BCSANGUS@GMAIL.COM

KEVIN SORENSEN
801-360-3300
KASANGUS@HOTMAIL.COM

CUSTOMIZED GROWTH SOLUTIONS

At Mountain West Agriculture, We're More Than Just A Company; We're Your Partners In Cultivation. Our Dedication To Your Growth Drives Us To Offer Unparalleled Agricultural Solutions Tailored To Your Unique Needs.

**CUSTOM FERTILIZER BLENDS | CUSTOM SPRAYING | GYPSUM
DISTRIBUTOR | SEED APPLICATION | FERTILIZER & COMPOST |
BAILING TWINE (BRIDON PRODUCTS)**



801.888.2775

OFFICE@MOUNTAINWESTAG.US



DEPENDABLE RESILIENT DETERMINED

Western AgCredit, the
DEPENDABLE lender RESILIENT
even during difficult times and
DETERMINED to help you succeed,
that ain't no bull!

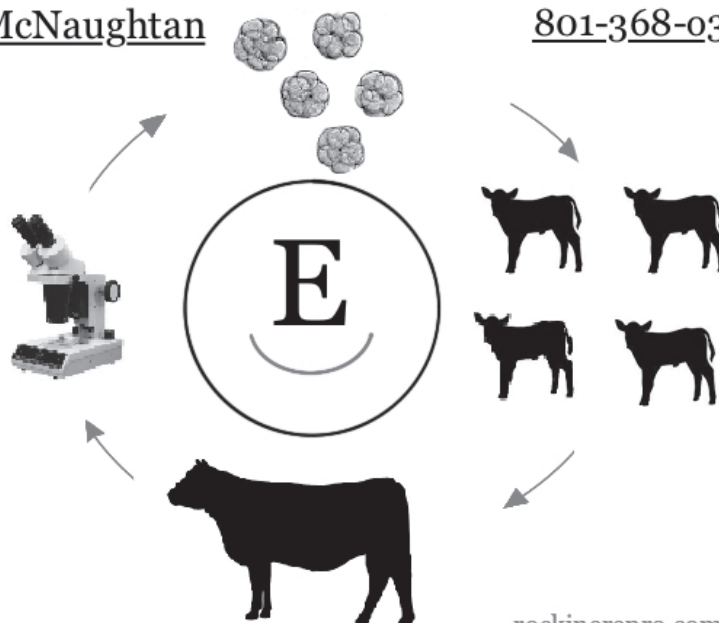


1.800.824.9198
westernagcredit.com

Rockin E Reproduction

Jared McNaughtan

801-368-0362



rockinerepro.com
rockinerepro@gmail.com

TOUGH ON TOUGH WORMS, EASY ON CATTLE PRODUCERS.

INTRODUCING **VALCOR**[™] (doramectin and levamisole injection)

Now you can achieve effective parasite control in one product, where before you may have needed two. Valcor (*doramectin and levamisole injection*) is the first prescription cattle dewormer with two active ingredients in one dose. It's never been easier to be tough. Get tough at ValcorTough.com.



IMPORTANT SAFETY INFORMATION: Do not treat cattle with Valcor within 15 days of slaughter. Not for use in female dairy cattle 20 months of age or older, including dry dairy cows; not for use in beef calves less than 2 months of age, dairy calves, and veal calves. Safety has not been evaluated in breeding bulls. Use with caution in cattle treated with cholinesterase inhibitors. This product is likely to cause injection site swelling; tissue damage (including granulomas and necrosis) may occur. These reactions have resolved without treatment. See Brief Summary of Full Prescribing Information on the next page.

All trademarks are the property of Zoetis Services LLC or a related company or a licensor unless otherwise noted.
© 2023 Zoetis Services LLC. All rights reserved. VLC-00007

zoetis

"CHOOSE A JOB YOU LOVE, AND YOU WILL NEVER HAVE
TO WORK ANOTHER DAY IN YOUR LIFE."

- CONFUCIOUS



Thanks for your support!

19th Annual
**Quest
of the West**
— Cattle Sale —





5626 SOUTH 4800 WEST
SPANISH FORK, UT 84660

Presorted
FIRST CLASS
US Postage
Paid
Ballyhoo Printing
59457

FIRST CLASS

Friday March 8th, 2024
6:00 P.M. SALE TIME

SPANISH FORK FAIRGROUNDS
SPANISH FORK, UT.
DINNER SERVED AT 5:00 P.M.

PLEASE BRING THIS CATALOG
WITH YOU TO THE SALE.

Their Progeny Sell!



LLW CARD TRUE NORTH G71 (SM)



JKGF 417 JUSTICE F819 (BA)



GENEX
SITZ BARRICADE 632F (AN)



HOOKS EAGLE 6E (SM)



OVER GAME DAY 443G (BA)



SITZ RESILIENT 10208 (AN)

LONG YEARLING AND YEARLING BULLS

TRICH & FERTILITY TESTED - TESTED BVD-PI NEGATIVE

ALL CATTLE PAP TESTED *Above 7200 Ft!* BY DR. RUSTY TRUMAN, DVM

ANGUS - BALANCER - SIMANGUS - SIMMENTAL